



Compiere 3.4 Release Notes

June 12, 2009

Table of Contents

Compiere 3.4 Release Notes

Compiere 3.4 Release Summary	3
• Audience	3
• Prerequisites	3
Software Management	3
• Previous Installations	3
• Recommended Infrastructure	3
• Process to Log Support Requests	3
• Update/Migration Procedure	3
• Install Procedure	3
• Application Extensions	3
• Command Line Scripts	3
New In Compiere 3.4	4
• Process Task Manager	4
• Dynamic Web Services	Compiere Professional Edition 4
• New Reports	Compiere Professional Edition 4
• Manufacturing	Compiere Manufacturing Edition 5
• Web User Interface Compiere 3.4	Compiere Professional Edition 5
Fixed Issues for Compiere 3.4	6
Product Enhancements for Compiere 3.4	10
Known Issues in the Migration Process	11
Known Issues in the Install Process	11
Known Issues in Compiere 3.4	13
Appendix A	14
Compiere 3.4 Migration Instructions	15
• Prerequisites	15
• Preserving Customizations	15
• Migration Steps	15
• Preparation	16
• Test Mode (optional)	16
• Migrate to a New Release	16
• Post Migration Steps for RMA/RTV	27
Appendix B	28
Compiere 3.4 Installation Instructions	29
• Prerequisites	29
• Database Installation	29
• Java Installation	29
• Download Compiere	29
• Run Application Server	37
• Start Compiere	38
Appendix C	39
Compiere 3.4 Application Extensions - Compiere Partners	40
• Registration of Application Extensions – Application Provider (Partner)	40
• Creation of Application .car file – Application Provider (Partner)	42
• Installation – Application Consumer (Customer)	44
Appendix D	45
Command Line Scripts	46

Compiere 3.4 Release Summary

Compiere 3.4 introduces the first end-to-end commercial open source enterprise manufacturing solution available on-premise and on the Cloud. Compiere 3.4 also includes new capabilities such as Web Services, new standard reports, additional features, functionality improvements and more than 90 bug fixes.

Certain features in Compiere 3.4 require a Compiere Professional Edition subscription. Contact a Compiere Authorized Partner or Compiere Sales (<http://www.compiere.com/company/contact-us.php>) to acquire Compiere Professional Edition.

Compiere 3.4 may include certain prototype features and beta functionality as indicated in their respective user interfaces with a beta checkbox. These are not recommended for production. They are intended only for evaluation as beta functionality.

• Audience

This guide is designed for Compiere Business Partners and Customers. It provides essential information for current Compiere administrators planning to install or migrate (upgrade) to Compiere 3.4.

• Prerequisites

- Working knowledge of Compiere ERP and CRM
- Compiere Web Store Access
- Sun Java JDK 1.6.0 Update 5 or Later
- Database Oracle XE, Oracle 10gR2, Oracle 11g, or EnterpriseDB Postgres Plus Advanced Server 8.3

Software Management

• Previous Installations

You can download the Compiere 3.4 from <http://www.compiere.com/wstore>. The migration tool will bring you up directly to Compiere 3.4 plus all the cumulative fixes included in the service packs without having to migrate to an intermediate release.

• Recommended Infrastructure

- Sun Java JDK 6 Update 5 or Later (not just JRE)
- also known as Sun Java SDK.
- Database Oracle XE, Oracle 10gR2, Oracle 11g, or EnterpriseDB Postgres Plus Advanced Server 8.3.
Tip: It is Mandatory to use a Unicode character set.
- Database approved Linux Operating System, Windows 2003 or Windows XP
- TCP/IP connection and Internet access
- Disk Space: > 5 GB (includes database)
- Swap Space: > 1GB
- Memory: > 1 GB
- Firefox Browser 3.0 is recommended for Web User Interface.

• Process to Log Support Requests

To ensure timely service for any issues, please use the Compiere's Case Management system. For details please review the [Support Requests](#) page on our website.

• Update/Migration Procedure

See [Appendix A](#)

• Install Procedure

See [Appendix B](#)

• Application Extensions

See [Appendix C](#)

• Command Line Scripts

See [Appendix D](#)

New In Compiere 3.4

The following is a detailed description of the enhancements made available in Compiere 3.4.

• **Process Task Manager**

Includes features to spread your operation workload to offload large document processing to off-peak hours thereby optimizing your machine resources

- Document workflow processing can now be scheduled for a future time.
- Ability to limit the number of concurrent workflow processes executed by each workflow processor

• **Dynamic Web Services**

Compiere Professional Edition

Web services provide a way of integrating Web-based applications using a set of open standards over an Internet protocol backbone.

Compiere Dynamic Web Services adhere to the Representational State Transfer (RESTful) web service architecture style to enable communications between applications. RESTful web services enable standard GET & POST operations for accessing resources over the internet.

With Compiere Dynamic Web Services, users have a uniform interface to access Compiere's data dictionary, the cornerstone of Compiere's business framework. They can retrieve data from any object, create new objects, and update existing objects, in the data dictionary.

Compiere Dynamic Web Services enhances ease of integration with the ability to perform searches on any object in the data dictionary, and requires no code changes to the web services even after changes are made to the data dictionary. By leveraging this dynamic capability, Compiere Dynamic Web Services can be created, updated and enabled for any customizations, extensions and modules developed on Compiere's business framework.

• **New Reports**

Compiere Professional Edition

Compiere 3.4 includes 14 new seeded reports. Following is the list of new reports available in 3.4:

Functional Area	Report Name
Inventory Management	<ul style="list-style-type: none">• Products with multiple vendors• UOM conversions of products• Product movement transaction detail• Product movement transaction summary• Stock replenishment report• Open confirmations for shipment and receipt summary• Open confirmations for shipment and receipt detail• Product storage detail• Stock valuation report
Cash Management	<ul style="list-style-type: none">• Unpaid vendor bills• Unpaid customer invoices
Financial Management	<ul style="list-style-type: none">• Trial balance• Balance sheet• Profit and loss statement

• Manufacturing

Compiere Manufacturing Edition

Compiere Manufacturing is an end-to-end planning and control solution that streamlines and automates critical business processes resulting in lower manufacturing costs and improved efficiencies. It is a tightly integrated, industrial-strength manufacturing solution encompassing all aspects of manufacturing including MRP, Production Control, Cost Management, and Reporting. And it is low cost, available on-premise or using cloud computing.

For more details about Compiere Manufacturing, please visit <http://www.compiere.com/products/capabilities/manufacturing.php>.

Here are some changes being introduced in Compiere Release 3.4 that you should be aware of if you are currently using or planning to use Compiere Manufacturing.

- Only products marked as Manufactured in the Product window are available for selection as product assemblies in work orders.
- A Current Active, Manufacturing BOM is needed to create standard work orders, run Cost Rollup and execute a Compiere Material Planning plan.
- Work orders are now frozen against changes once they are released to the shop floor by updating the document status to Prepared.
- You must define a new cost element with Cost Element Type Material and Manufacturing Material Cost checked before you run the Cost Rollup process. This cost element is used to store the material costs associated with components for the product assembly.
- You must create or update the Accounting Schema default account values for new accounts added to support Manufacturing features. Propagate these new account values to work order classes, product categories and products

• Web User Interface Compiere 3.4

Compiere Professional Edition

In order to get properly acquainted with the Web User Interface, please read the section on “Using the Web Application” in the user documentation.

At present, there are still some known features available in the “Java Swing” User Interface that are not yet available in Web User Interface. Most of these features are scheduled for a future release.

The following features are currently **Not Available** in the Web User Interface. However, they are fully functional in the “Java Swing” User Interface:

- Resource & Schedule Info Windows – Info Window available from the ‘View’ menu to view Scheduled Resources.
- Resource Assignment – A Form used to schedule a resource accessed from the Assigned Resource field in a Sales Order, Project, or Expense Report.
- Personal lock – A security feature accessible from the toolbar used to lock a specific record to keep the record private. It is also used as a method to set security access rules for specific records.
- Archive Viewer – A window used to view the Archived Records. Records or Documents can be archived via the toolbar from the document viewer or automatically via a setting available in the tenant window.
- Ability to print mass shipments – A process available from the Main Menu used to print multiple shipments.
- Print from info windows – A button accessible from any Info window used to print a screen shot of the information.
- Drill down on reports – Interactivity on Reports which enables you to view a different report from a drill menu where a selected record is used.
- Ability to email documents/reports as attachment – A button available from the toolbar of any report or document that opens an e-mail dialog box with the report attached as a .pdf file allowing users to send the report via e-mail.
- Product attribute grid – A form available from the Main Menu which allows users to select an Attribute and view a grid of which products are available with the selected attributes.

Important: The Firefox Browser 3.0 is recommended when using Compiere Release 3.4 with the web user interface.

When using Internet Explorer 7.0, verify the options: "Always switch to new tabs when they are created" and "A new tab in the current window" are enabled: Under Tools> Internet Options> General Tab, open the Tab settings.

Internet Explorer 8.0 is not certified yet.

Fixed Issues for Compiere 3.4

Compiere Case Number	Description
10016396	Selection extends too far in multiline boxes
10016464	Prepay order stays at waiting payment status
10016530	Customers have invalid created and updated dates
10016667	Record count on tables with restricted access
10017130	The Product Cost Summary report doesn't show the correct 'Current Cost Price'.
10017154	HTML UI - Message relating to a document process (Complete, Void, etc) is not displayed correctly - the field on the window is too small to display the full content.
10017955	Financial Report: Range bug
10018000	Delete client function in RUN_setup/Migration fails on EnterpriseDB ALTER TABLE AD_Org DISABLE CONSTRAINT fk155_527 - ERROR: syntax error at or near "CONSTRAINT" [12]
10018086	Context remembers last record.
10018280	On the Payment Selection > Create Lines From window, there is the option to enter a document number range. The "Document Number To" field is sized incorrectly, i.e. it is less than a character wide. Window needs resizing, or field moved to a row.
10018337	Calculator (Numeric fields) When click on the calculator icon for a field that contains "0.00", and then enter a digit, it is appended after the "0.00" that is initially displayed in the calculator. (Resulting in "0.006", for example).
10018972	Validation rules & new record (dependent fields retain last parent)
10019035	Approval process could not be set for GL Journal Batch.
10019049	Report "Invoice Not Realized Gain/Loss". GL Journal has been not created.
10019223	In this support request system, when I open an attachment, I can only see part of the file. There is no scroll bar.
10019287	In the web ui, when a field with a drop down menu is mandatory UI but not mandatory, the blank option is available as a choice. Should not let the user select the blank and then get the error message when trying to save.
10019315	PDF maker works not correctly with some Lithuanian letters.
10019339	Replicated: RV_OpenItem only excludes docstatus draft "DR" and doesn't take into account the workflow status "in progress" "IP".
10019472	I've multiple Account Schemas, but only the account elements of the primary one are proposed in reporting.
10019538	Role Access Update rules doesn't work in Web UI
10019574	A 'On Credit Order' is created. This order is put into 'Prepare' mode. A day/week/month passes before this order is completed. On completion Compiere assumes the order date as the Invoice date and thus accounts for it on the order date. This cannot be the case as a long period of time could have elapsed since the order date. The invoice date should in fact default to the context date(getCtx().getContextAsTime("#Date")).
10019620	Web Only If you use "Create lines from" on a new vendor invoice and select a receipt the

Compiere Case Number	Description
	process will not put the project from the receipt to the invoice..
10019720	Quantity Returned field updated when using "Copy Lines" button on order:
10019752	When creating a new report & process, in the aftersave of MProcess, it attempts to give access to the report & process to all "automatic" roles.
10019754	If I create a PO and complete it and then create the receipt via "Create Lines From" and Complete the receipt the PO is not set as IsDelivered='Y'. The PO lines column DateDeliverd is filled and PO / Receipt are matched. I would expect that this flag would be set to 'Y' if a PO is received completely.
10019756	Cannot activate an Approval process for GL Journal.
10019792	The return string of a SvrProcess on the Swing UI interprets HTML correctly. If I use I get a line break. On the Web UI the return value is showing the HTML tags as clear text instead of interpreting it.
10019799	MYear. createStdPeriods There is a spelling mistake in the list of months in the code. ("Nar")
10019825	Search vs Table Direct on Web UI
10019910	Import Invoice. If in the import invoice window there are records for different organizations, when running the Import Invoice process the system imports all entries into first organization only. This does not occur if you enter the data directly in the import invoice window, it must be loaded using file loader
10019955	Issue starting the JBoss Server on a windows laptop. We have tried running the RUN_SETUP process many times, and rebooting the PC over the last few days but repeatedly get the error. The developer guys are unable to determine what the problem is. Version 303 and 320 jboss servers work without a problem on the same laptop.
10019969	Compiere 3.2 generates 2 invoices with same document number.
10020003	A voided payment can be selected in a bank statement.
10020008	When i build the SHRM component, i get the following error message in the console: [java] 19:12:12.370 Component.create: Compiere Migration 3.2.0 (20081001) [java] 19:12:12.607 MTable.getPackages: #13 [java] =====> DataSelection.a: SELECT * FROM C_PeriodControl WHERE DocBaseType=?
10020035	The Advanced Search criteria bring back unpredictable results in the support request windows..
10020063	There is a difference between tree view in web UI and tree view in GUI. Account number doesn't appear.
10020066	#Component Installation problem#
10020080	Posting immediate set on the Tenant does not work in all cases For example when you reverse an Invoice, the reversed invoice is not posted
10020098	When I applied to the translation RUN_TrIImport.bat in version 3.20 or 3.21 error leaves attached, and when I run in Translation System Import / Export does not work on all files TRL.
10020157	Calculation Open Balance field on Business Partner (and credit used on customer tab)
10020174	Save button activated after leaving amount field

Compiere Case Number	Description
10020211	Bold fonts / other font size on embedded print formats.
10020213	MR Confirmations - confirmation quantity on the MR line is not updated when a confirmation is processed. Occurs in all scenarios.
10020215	Confirmations: 1) When entering one of confirmed qty or scrapped qty and tabbing off the field, the other 3 fields (confirmed, scrapped and difference) should be updated automatically. Currently this is only performed on save. 2) The save button is always enabled. It should only be enabled when a change is made.
10020237	Web UI - Customer RMA window: The warehouse field is not being set, and the field is read only, and hence the user gets an error when saving of warehouse missing.
10020297	The sales order screen on the swing client allows for negative number entries (essentially credit line items), but the sales order screen on the webUI does not. If I try to enter a negative \$ amount in the web UI, it changes it to zero (0). The same with a negative quantity.
10020359	When entering address info for a new customer from the Sales Order via the 'New Customer' option (after you right click). You enter the address info and if you click 'Enter' on the keyboard, it doesn't invoke the ok or save. The information is gone.
10020386	Unable to import Business Partner with Locations:
10020448	We need to create a report with parameter as Business Partner of reference type 'Search', which should only show Business Partners having check box 'Vendors Only' as one of the parameter on search window. To achieve this we referred to Core Compiere report which are meant for vendors only like 'Monthly Invoice Vendor' but found different behavior of the search window of 'Business Partner' parameter.
10020449	The requirement is to create a report with parameter as 'Payment' of reference type 'Search' which should only show Completed AP Payments having default value of check box 'Receipt' = 'N' which is one of the parameter on search window.
10020491	Web UI Only: After installing French language pack, translated Window Help not appearing in Web UI. Works OK in SWING.
10020503	When the first field of a field group is not displayed (because of the display logic) then the field group header is not shown.
10020534	Import Product: If the Limit Price is set as 0.00 and a price list is defined, then the system reports that an entry in the price list is successfully, but no entry is made.
10020537	Web UI: Unable to zoom to the Consolidation Reference from inside the Business Partner > Customer tab.
10020555	Account viewer does not filter account number. If you select one particular account you still see the other ones.
10020568	Web UI: Alt-up keyboard shortcut not working (used for moving up to parent tab). Regression was working in 3.2.1.
10020604	Read only access for windows does not work well in WebUI It is possible to modify a record, even if the login role have only read only access to the window.
10020633	WMS is considering strategy lines that are marked as inactive when it should ignore them.
10020634	SWING only. Putting large value in a numeric field causes unexpected results. Enter the value of

Compiere Case Number	Description
	say 9999999999999999 in the following fields (as an example): - Business Partner > Employee field - Business Partner > Share field - Locator > Picking Sequence and when you tab off the field the system enters the value of 276,447,231 in the field. System should either accept the value, or display an error saying it is too large.
10020635	Payment Selection: Create a new record in the Payment Selection header tab. Don't save the record and move to the line tab. 1) The system doesn't show the record in new mode. 2) The system hasn't saved the header correctly and so the Payment Selection field isn't populated correctly.
10020643	For a process with one parameter, the title Parameters does not appear and the "Process Now" message does not appear once the OK button is pressed.
10020652	Create payment from Bank Statement uses deactivated DocType
10020653	Swing UI. Create a Sales Order with a charge on it. Enter Shipment (Customer) window and manually create a shipment line for the charge. System displays error "ORA-02991" error. Don't get the error if shipment generated via a process.
10020654	WMS Bug: If a Sales Order is marked as Complete Order, and has an item and a charge on it, no pick task is created in WMS.
10020655	WMS bug: Running various WMS processes do not look at the print format on the relevant document type, only the default document on the Print Form window.
10020656	WMS bug: Default Compiere Dispatch Note has a backordered field on it. Generating the Dispatch Note from the Task Management window produces a Dispatch Note based on the draft shipment. However, the backordered qty does not take into account the current shipment (because it is draft), hence it is too high - the correct backordered qty is only displayed for completed shipments.
10020674	WMS Bug: Special Order Products can be stolen by the wrong sales order.
10020675	Locator Info > Locator Detail window. Qty Reserved is being displayed in the Order Qty field.
10020702	PO.java class in line 489 : get_AccessLevel() instead get_AccessLecel()
10020714	a) Material Receipt - What is the "Date Received" field on the header used for? b) Confirmation window - what is the "Confirmation Number" field used for?
10020724	Deletion of documents with active workflow Documents like Orders and Invoices can currently be deleted until the "Processed" field is set to true.
10020764	Unable to void putaway tasks: 1. While voiding putaway task Compiere throws an error "Cannot Reverse task : Shipment already completed". 2. After looking at the code it seems to be putaway task voiding (isSOTrx ='N') is not handled, above message is valid in case of Pick task voiding. 3. In case of putaway task voiding it should not check for whether MR is voided. It should void the putaway task which will move the material from stock location to receiving location and then MR can be voided to create the reverse entry. 4. While creating of reversal of Putaway task the ASI (Attribute Set Instance ID) of the original task has to be copied to the reversal task else MR voiding will fail.
10020765	Acknowledge Notices / AD_Note.Processed In current Compiere releases it is not possible for a user to acknowledge a notice. I suspect that this is caused by the fact that the AD_Note.Processed column is now marked as not updateable.
10020819	Currency Rate window. The "Valid To" date field is an optional field. When saving a record the system is inserting a date of 29/01/2056 (in UK date format). The field is unable to be set to null.
10020824	Invoice reversal (description) (curlly brace used as opening in the first case)
10020825	Invoice selection on bank statement (only completed),It is currently possible to

Compiere Case Number	Description
	select any invoice on a bank statement line.
10020839	The edition of reports on the web interface does not work. On "My reports", when i edit a report (Sales Order Summary), nothing is retrieved : fields, order, etc.
10020846	Bug: Customer RMA - when selecting the original order, details from the original order are copied across to the RMA. However the Order Reference is not, and we believe that it should be.
10020847	BUG: Orders/Material Receipts/Invoices (- all documents with a product field) When entering a product search key in the product field, the system isn't finding the product. The system is checking against the product name field but not the product search key.
10020957	We have a question about the Inventory Movements with Confirmations. We try to create a movement with 10 units of a product and try to confirm 8 (or 12), ie confirm with differences. When we did this we got the error "isFullyconfirmed". We saw the code and we note a new line in the code that if exists differences between the movement and the confirmation Compiere throw the error.
10020975	'Import File Loader' window lists all 'Import Formats' irrespective of Tenant.
10021003	When using the tab key to go from field to field in a window, the focus skips those fields that are defined as date/time and time. The fields defined as date fields work fine, so do other fields.
10021063	Regression Bug: The Product > Locator tab gives an error when saving data - error: "NotSaved Fill mandatory fields: Organization." The organization field is read only defaulting to *. Problem in both Swing and Web UI.
10021076	Problem to filter the records with the "DateFrom" and "DateTo" in Material Transactions Form see Screen Shots Added.

Product Enhancements for Compiere 3.4

The following is a list of the enhancement Requests that have been completed in Compiere 3.4.

Product Enhancement	Description
10019831	When importing invoices via file loader, please could the Organization Search Key be added to the Import Invoice table, to be used with the current Organization ID field? This follows similar logic to product id and product search key, business partner id and business partner search key, etc. We are importing into multiple organizations and the ID will not be known by the user, but the search key will be.
10019914	Ability to define on Import Business Partner if it is a Customer, Vendor or Employee?
10020056	Hi, When generating a component base on a entity type, Compiere include record from another entity and dictionary.
10020089	When creating a Business Partner using the "Quick entry form" (from the Sales Order window), the Org assigned to the newly created BP is not the expected Organization.
10020230	Please modify the migration wizard in order to write to the log file the ID (not only the name) of the changed record.
10020532	Product Import: The new field "Purchase To Order" is not available in the Import Loader Format.
10020539	Wave Planning window/Process includes Products of the type Service. It is expected that only products of the type Item are included (can't pick services!). However, when generating a shipment service lines would need to include.
10020558	Shipment Management: If an order is marked as Complete Order, and the goods parts of the order are picked and shipped via tasks and the Shipment Management window,

Product Enhancement	Description
10020822	Business Partner Import: The new WMS field Consolidation Reference is not available on import or in File Loader.

Known Issues in the Migration Process

Warnings and Error Messages you may see during the Migration steps.

Migration Issues – Warning/Error Messages	Database	Comments
ORA-00001: unique constraint... violated	All	This might indicate referential issues in your pre-migration data. Review the problem data.
ORA-01408: such column list already indexed	All	This is an acceptable warning message.
ORA-01440: column to be modified must be empty to decrease precision or scale	All	This is an acceptable warning message.
ORA-02296: cannot enable	All	This is an acceptable warning message.
ORA-02275: such a referential constraint already exists	All	This might indicate referential issues in your pre-migration data. Review the problem data.
ALTER TABLE S_ResourceType MODIFY ChargeableQty NUMBER(10) DEFAULT NULL Failed sql statements ERROR: cannot alter type of a column used by a view or rule Detail: rule _RETURN on view rv_asset_delivery depends on column "lot" - ALTER TABLE A_Asset_Delivery ALTER Lot TYPE VARCHAR(255) , ALTER Lot SET DEFAULT NULL No Key & No Parent - Table AD_RecentItem	EnterpriseDB	This is an acceptable warning message.
While executing RUN_Setup, refreshing an existing instance =====> DB_PostgreSQL.getDataSource: DB_EnterpriseDB[null] [12] java.lang.IllegalArgumentException: DataSource with name 'CompiereDS' already exists!	EnterpriseDB	This is an acceptable warning message
While executing RUN_Setup -----> ModelValidationEngine.addClasses: GardenWorld: compiere.model.MyValidator - java.lang.ClassNotFoundException: compiere.model.MyValidator [12] -----> ModelValidationEngine.addClasses: Extended Units of Measure: org.compiere.xuom.XUOMModelValidator - java.lang.ClassNotFoundException: org.compiere.xuom.XUOMModelValidator [12]	All	This is an acceptable warning message
ORA-01452: cannot CREATE UNIQUE INDEX; duplicate keys found - CREATE UNIQUE INDEX AD_PrintformatItem_Unique ON AD_PrintFormatItem (AD_PrintFormat_ID,Name)	All	Migration of additional components (.car) with print format items won't work as expected.

Known Issues in the Install Process

Warnings and Error Messages you may see during the Import steps.

Install Issues – Warning/Error Messages	Database	Comments
-----> g.a: DROP SEQUENCE T_Spool_Seq -----> g.a: ORA-02289: sequence does not exist	All	This is an acceptable warning message.
-----> DB_PostgreSQL.convertStatement: Convert error! Converted statement Number=2 (CREATE OR REPLACE VIEW ...	EnterpriseDB	This is an acceptable warning message.
-----> DB.saveError: DBExecuteError - ORA-00001: unique constraint (COMPIERE.C_REGION_NAME) violated [15] -----> MRegion.saveNewInsertSQL: Not inserted - C_Region [15] -----> ProgressPanel.publish: Unable to import Region, requires UNICODE database	All	These are acceptable if your database is not set for Unicode.

Install Issues – Warning/Error Messages	Database	Comments
<pre>[15] =====> DB.executeUpdate: INSERT INTO C_Region (AD_Client_ID,AD_Org_ID,C_Country_ID,C_Region_ID,CreatedBy,Description,Is Active,IsDefault,Name,Updated,UpdatedBy) VALUES (0,0,216,438,TO_DATE('2006-02-23 15:43:34','YYYY-MM-DD HH24:MI:SS'),0,'???(Miyasaki)','Y','N','???',TO_DATE('2006-02- 23 15:43:34','YYYY-MM-DD HH24:MI:SS'),0) [null] [15] java.sql.SQLException: ORA-00001: unique constraint (COMPIERE263.C_REGION_NAME) violated; State=23000; ErrorCode=1 at oracle.jdbc.driver.DatabaseError.throwSQLException(DatabaseError.java:125) at oracle.jdbc.driver.T4CTTloer.processError(T4CTTloer.java:305) at oracle.jdbc.driver.T4CTTloer.processError(T4CTTloer.java:272)</pre>		
<pre>At the very end of the install process or when manually executing utils/RUN_Support 13:07:55.094 Compiere.startup: Client lap-fr/10.104.139.177: C:\Compiere2 - Java HotSpot(TM) Client VM 1.5.0_11-b03 - Windows XP 5 .1 Service Pack 2 [15] Exception in thread "AWT-EventQueue-0" java.lang.NullPointerException at javafx.swing.plaf.basic.BasicScrollBarUI.layoutHScrollbar(BasicScrollBarUI.java:676)</pre>	All	No effect on the functionality. You may ignore this error.
<pre>Error after clicking Save on the RUN_Setup window =====> CConnection.createConnection: jdbc:oracle:thin:@//lap-fr:1521/xe, (1) AutoCommit=true,TrxIso=READ_COMMITTED - ORA-010 17: invalid username/password; logon denied [12] -----> CPreparedStatement.<init>: ALTER TABLE AD_System MODIFY Summary NVARCHAR2(2000) [12] java.lang.UnsupportedOperationException: No DBConnection at org.compiere.util.DB.getConnectionRW(DB.java:228)</pre>	All	No effect on the functionality. You may ignore this error
<pre>Error installing the sample application extension XUOM Failed sql statements: ORA-00955: name is already used by an existing object - CREATE INDEX M_Product_ProductCategory ON M_Product (M_Product_Category_ID) - java.sql.SQLException: ORA-00955: name is already used by an existing object</pre>	All	This is an acceptable warning message
<pre>Error installing the sample application extension XUOM Create Views ***** Starting to create views for entity: XUOM Created view #1 for entity: XUOM Failed sql statements <<ERROR: ERROR: relation "m_product_expensetype" already exists - CREATE UNIQUE INDEX M_Product_ExpenseType ON M_Product (S_ExpenseType_ID) - java.sql.SQLException: ERROR: relation "m_product_expensetype" already exists>> ... same error for other indexes... <<ERROR: ERROR: constraint "fk208_10919" for relation "m_product" already exists - ALTER TABLE M_Product ADD CONSTRAINT FK208_10919 FOREIGN KEY (C_SubscriptionType_ID) REFERENCES C_SubscriptionType (C_SubscriptionType_ID) - java.sql.SQLException: ERROR: constraint "fk208_10919" for relation "m_product" already exists>> ...same error for other constraints...</pre>	All	This is an acceptable warning message

Known Issues in Compiere 3.4

Issues you may encounter using Compiere 3.4

Issue	Database	Solution
Web UI: After running a large report in Firefox, the user may get a message that "The File is damaged and could not be repaired". The workaround is to save the PDF on your machine using "File->Save Page As" in the Firefox window, and then opening the PDF.		
Web UI: Description is not available in workflow editor. Process requisition workflow. You should be able to see the description (ex: {10: Total Lines >100})		
Web UI: When any of the Workflow Review (i.e. Initial Tenant Setup Review) windows are displayed and then the menu tree is expanded over the workflow review, the icons for the steps in the workflow overwrite the menu options.		
Web UI: There is no button Panel at the bottom of the page for workflow Navigation in workflow editor window.		
Error when executing BVL reports on EnterpriseDB JasperReportServer.startReport: BVL Schema does not exist	EnterpriseDB	BVL is currently not supported on EDB
Firefox only. Error message when attaching any attachment to a window: An error occurred while uploading the attachment. Please reload the record and try again The attachment as such works but only gives an error. In order to see the attachment to a record, reopen the window.		

For a current list of open issues please query the list of public requests from our request system <http://www.compiere.com/support/support-requests.php>.

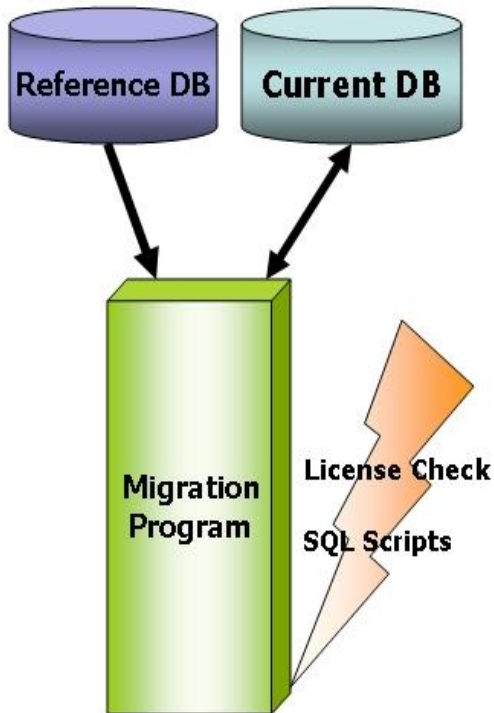
Appendix A

Compiere 3.4 – Migration Instructions

Compiere 3.4 Migration Instructions

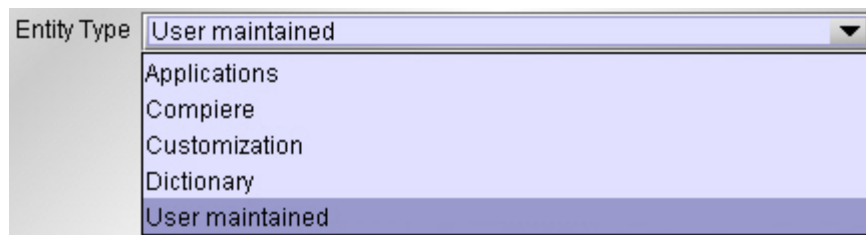
• Prerequisites

- A valid Support contract
- Sun Java JDK 6 (SDK) – Update 5 or later (not just JRE)
- Database Oracle XE, Oracle 10gR2, Oracle 11g or EnterpriseDB Postgres Plus Advanced Server 8.3.



• Preserving Customizations

Compiere will not modify any customizations - as long as the customizations are marked appropriately! By default, all added records in the dictionary will have the entity type "User Maintained":



- In the Change Audit window, mark the changes as Customizations before running the migration.

Tip: Alternatively, changes may be applied manually.

- Before performing the migration, run it in the test mode to ensure all customizations will be preserved.

• Migration Steps

Migration Consists of the Following steps:

- Preparation
- Test Mode
- Migrate to a New Release
- Post Migration Steps

• Preparation

Use the following steps to prepare for the Migration:

- Server needs to have access to the Internet.
- Stop the application server by executing `utils/RUN_Server2Stop`
- Backup the database
- If you are running EnterpriseDB 8.2 or older you must upgrade to EnterpriseDB Postgres Plus Advanced Server 8.3
- Rename `COMPIERE_HOME/jboss` directory
- Delete `COMPIERE_HOME/data/compiere_'CPRO'.car` file (filename including single quotes)
- Delete `COMPIERE_HOME/data/compiere_'XUOM'.car` file (filename including single quotes)

Test Mode (optional)

First, run the Migration Program in Test mode. This allows the ability to evaluate the actions taken when running it against the database. Please note that the first step (resolve ID conflicts) will not show the correct future IDs in test mode.

If the program marks certain wanted tables for deletion, then create the table in the data dictionary (Window Table/Column) with the Entity Type *User* or *Application*.

If the program marks certain wanted columns for deletion, make sure that the column has the Entity Type *User* or *Application*. If the wanted column has the Entity Type Data Dictionary or Compiere and it is marked for deletion, then copy it under another name and mark the new column as *Custom* or *Application*.

The same applies to windows, tabs, fields, etc.

Mandatory User or Application Columns must have a default value defined in the database, e.g. `ALTER TABLE someTable MODIFY (myColumn DEFAULT 'myDefault')`, otherwise adding new records will result in an error.

Check List:

- Server has HTTP (port 80) access to the Internet
- Compiere web store Asset - Support Contract

System Operation Steps:

- Resolve ID Conflicts from Customizations/Extensions
- Synchronize Data Structure (Table/Column/Index/Constraints/..)
- Synchronize Data Content

• Migrate to a New Release

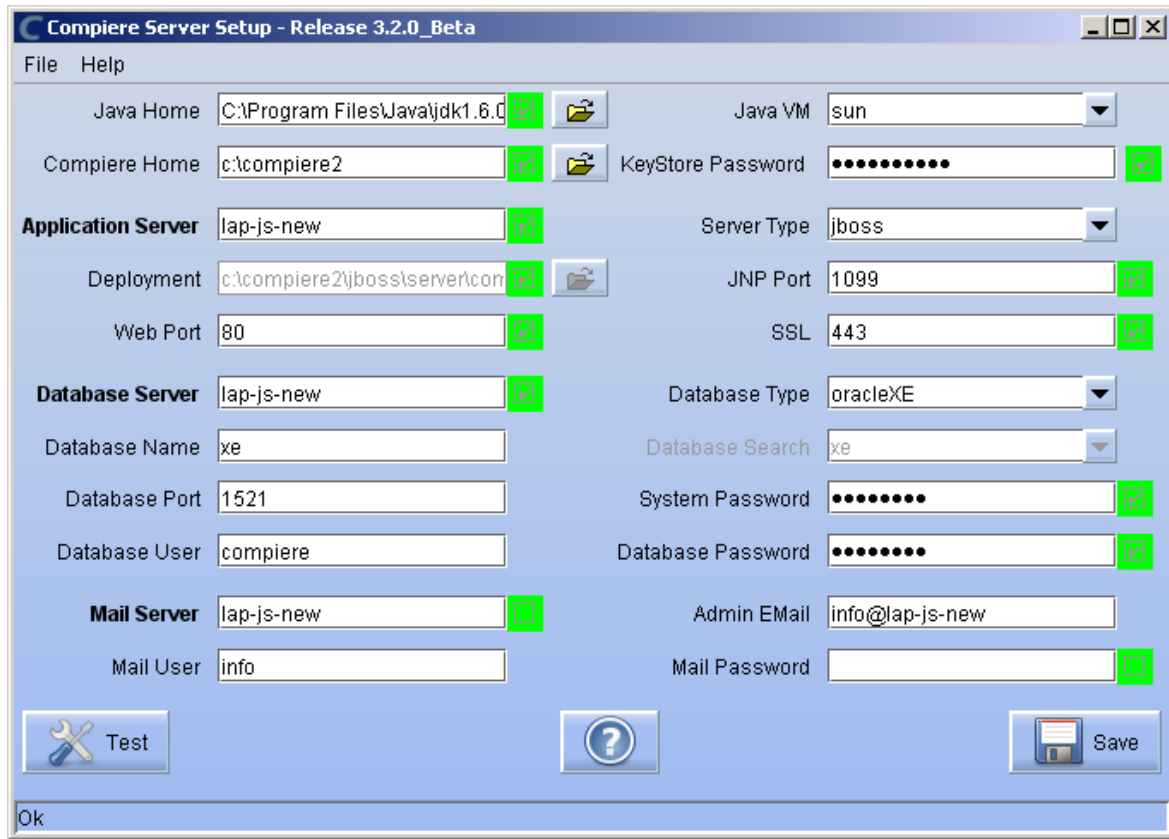
Use the following steps on the Application Server box for migrating to the new release:

- 1) When upgrading from 3.2.1 or older delete or rename the existing jboss subdirectory (due to different JBoss version and configuration files.) Download and unzip/untar the distribution file, (e.g. `Compiere_3XX.X.zip`.)

Tip: It is also possible to extract the distribution file into a new directory and copy your configuration files. Then change the **COMPIERE_HOME** environment variable to the new directory.

- 2) Execute **RUN_setup**. Verify all your environment settings and click Save to continue. If you get any errors in the parameters validation, you'll see a red icon right next to the parameter with the problem; make the required changes, click Test to run the validation again and then click Save to continue.

Note: The screen shots show version 3.2.0_Beta but these also apply for 3.4.



- 3) The Compiere Public License Opens. Click "Yes, I Understand and Accept" to continue.

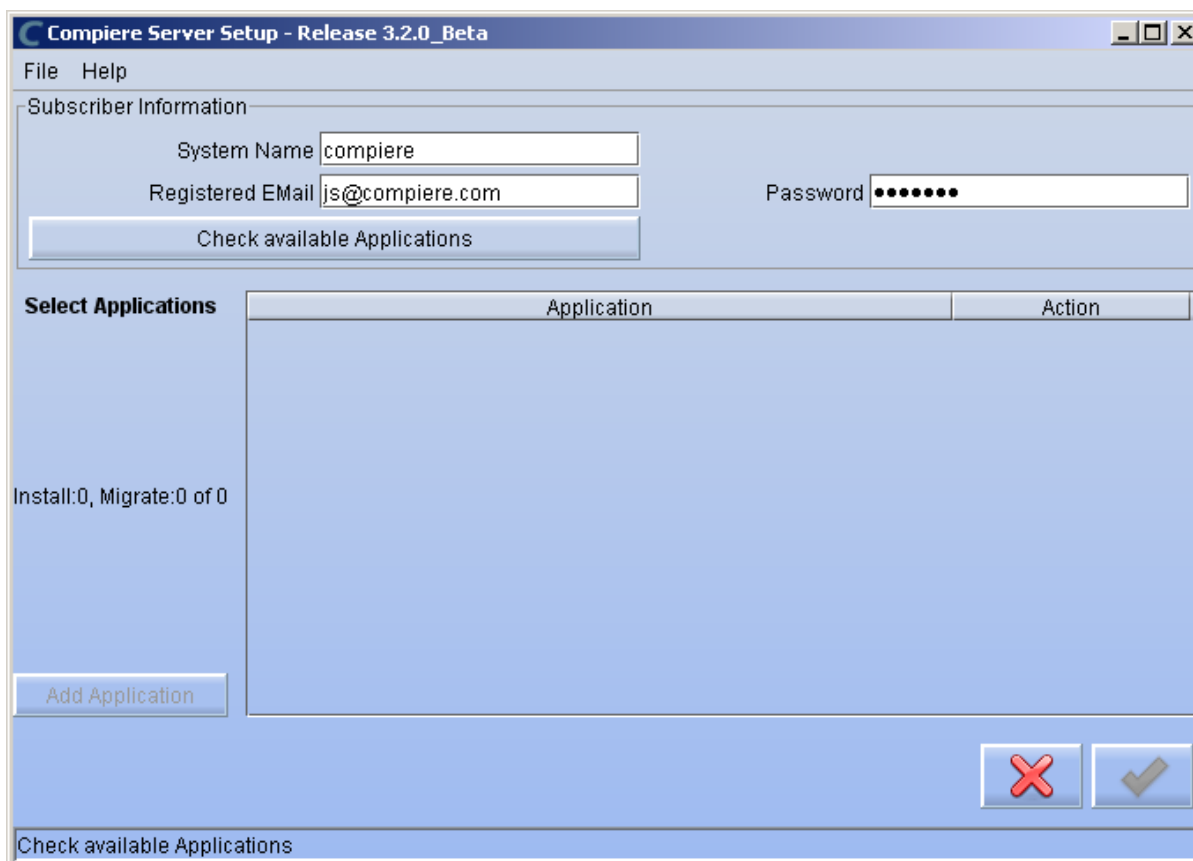


- 4) The following prompt will display describing your new Security Key. Click 'Ok' to continue.



- 5) The Next step is to provide the Subscriber Information. Current customers should provide the subscriber information (System Name, Email and Password) exactly as it was registered in the Compiere Web Store to get a complete list of applications.

Click Check Available Applications to get a list of applications that are available to be installed.

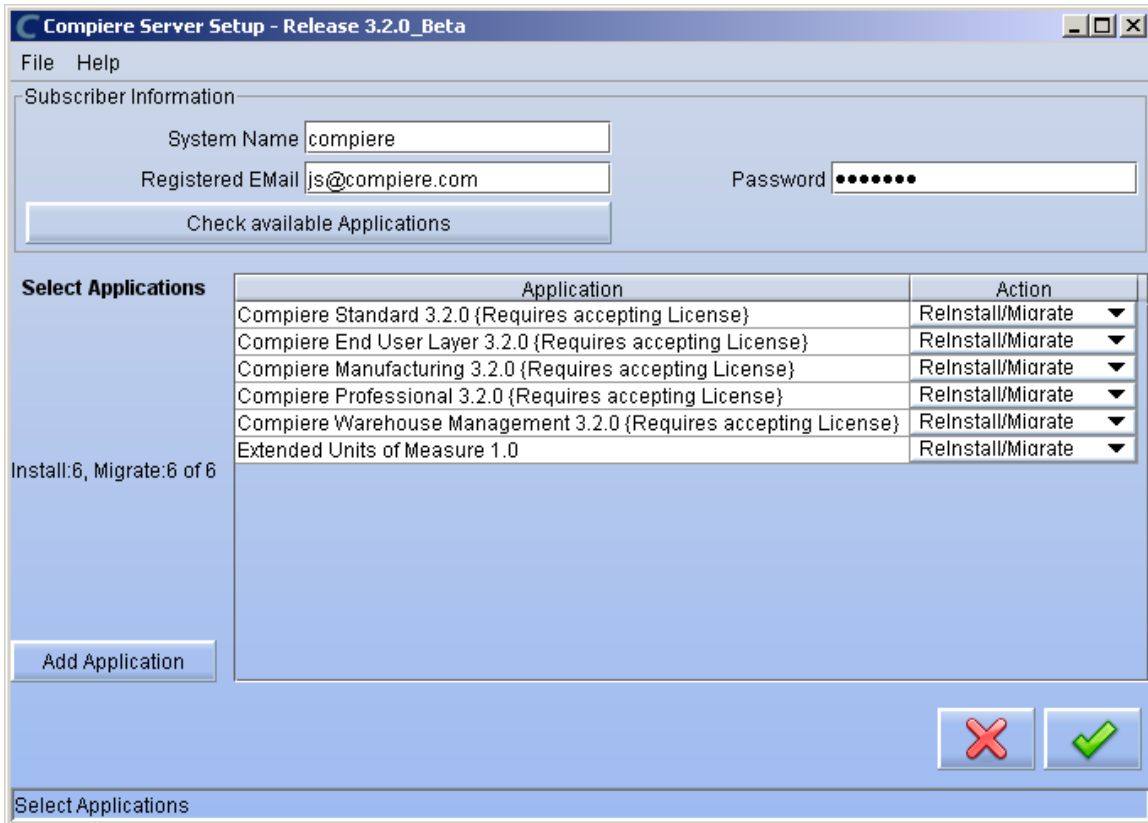


Note: To install additional applications once you have installed or migrated to the latest Compiere Core version, you must select Compiere Core plus any additional applications to install, and then run Migration.

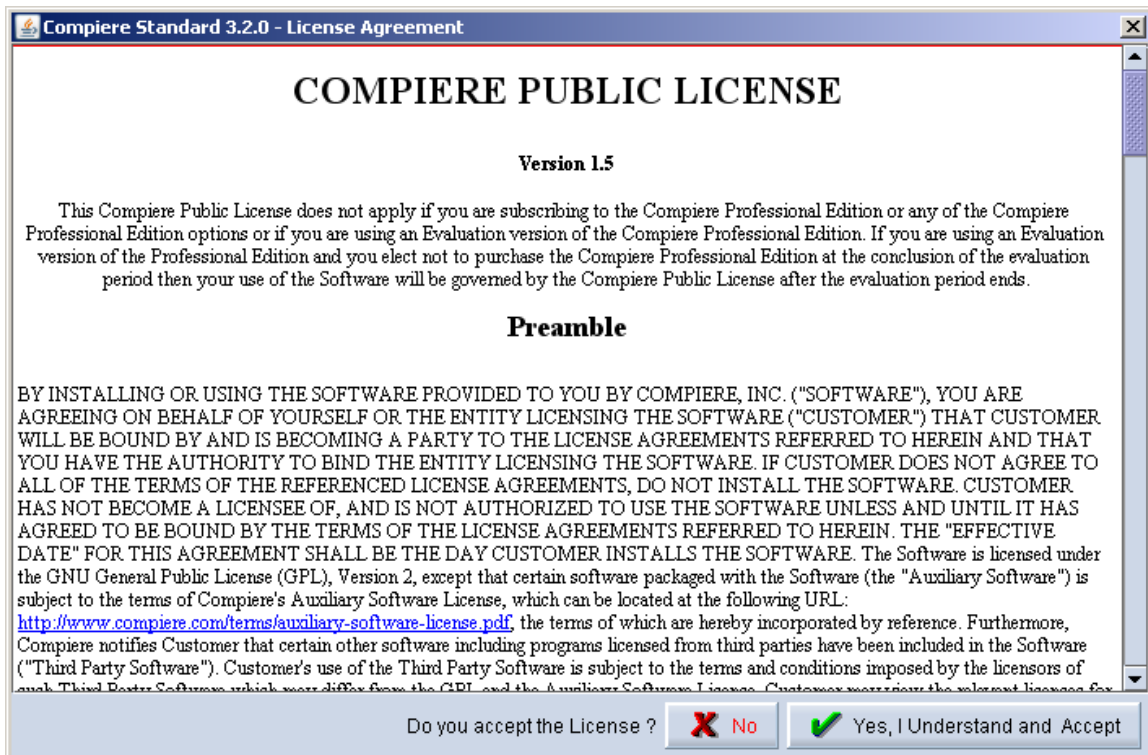
- 6) Select the applications that you want to migrate and select the action **Reinstall/Migrate**. Compiere Core 3.0 is the main application that must always be installed or migrated to the latest release, but you also may choose additional applications provided by Compiere or any of our authorized partners.

Tip: If you do not wish to install or migrate any of the applications listed, be sure to change the action to –

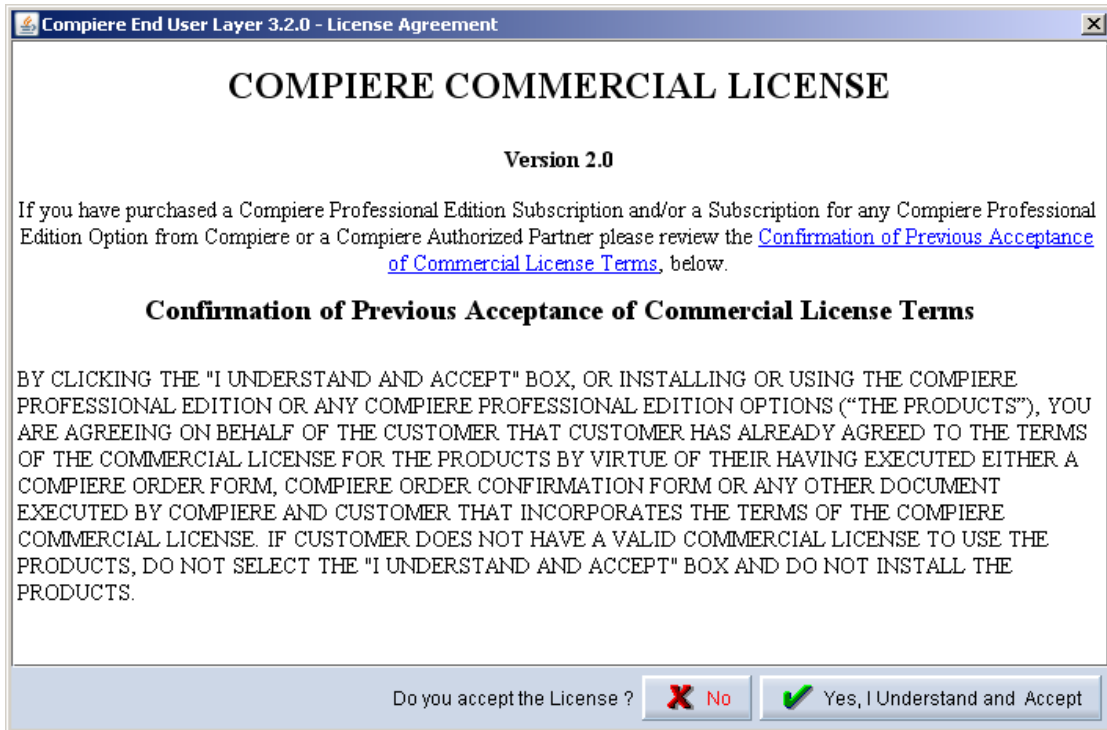
None- To install new applications change the action to New Install



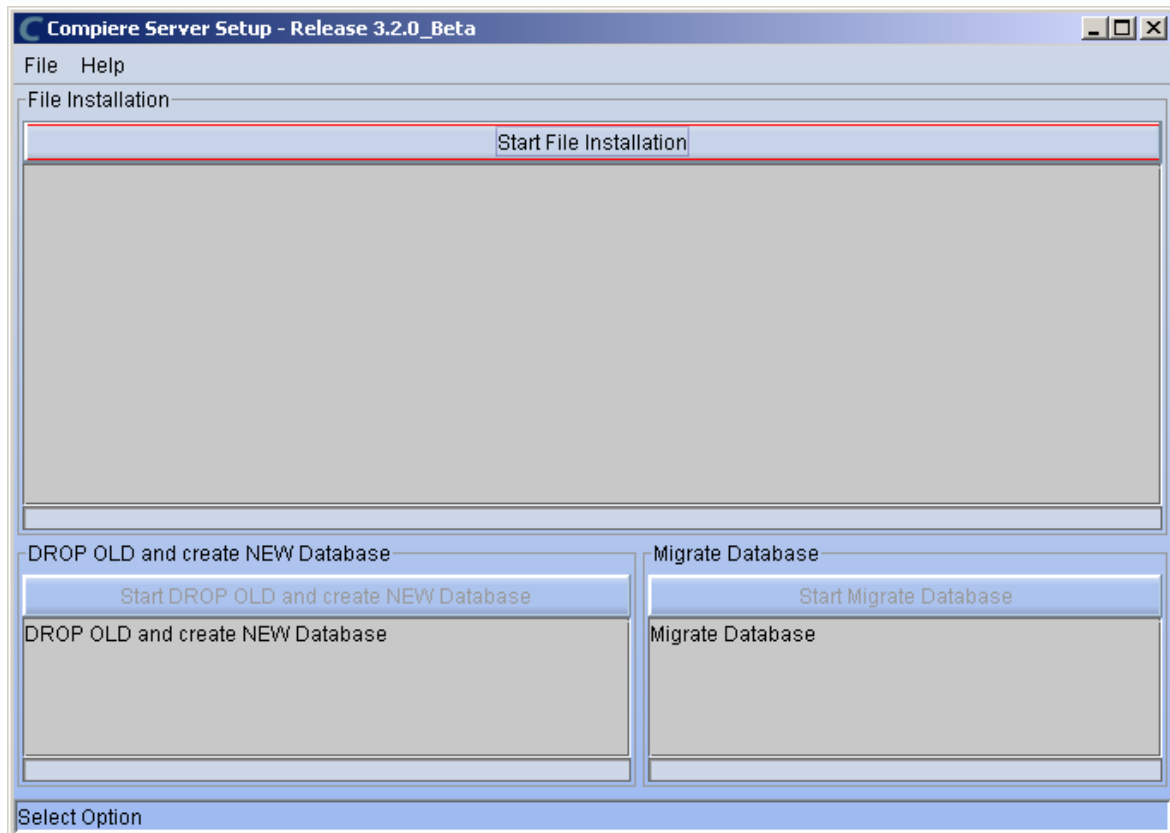
- 7) Next, read and accept the Compiere Public License agreement.
Hint: You might get more than one license agreement, depending on the applications that you are installing. Notice that XUOM is a sample application extension



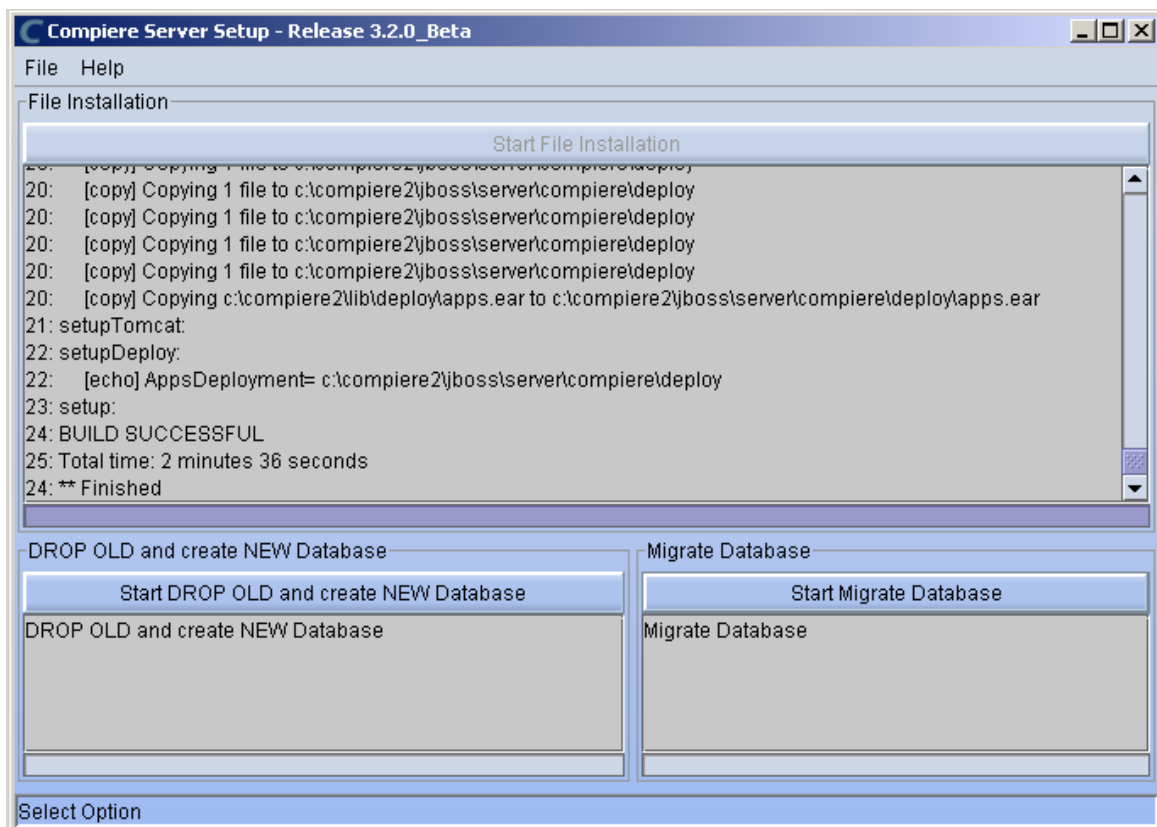
- 8) If you are installing Compiere Professional, you will receive a Commercial license agreement. Please read and accept the license agreement, in order to continue.
Hint: You might get more than one license agreement, depending on the applications that you are installing.



- 9) Click on Start File Installation



10) When the File Installation has completed click on Start Migrate Database.



11) Provide the following information exactly as it was registered in the Compiere Web store and click Check License to validate your asset information (Note: This information may already be populated if it was entered in the system window)

- System Name
- Registered Email
- Password

Compiere Support 3.2.0

System Name: compiere

Registered EMail: js@compiere.com

Support EMail:

Target URL: jdbc:oracle:thin:@//lap-js-new:1E

Support Expires: 2010-02-06 00:00:00.0

Source URL: file:/c:/compiere2/data/compiere

Source UserID:

System Status: Evaluation

Password:

Support Units: 0

Supported Users:

Support Level:

Existing Support Contract

Compiere Standard: Licensed (pdf licensed), Expires 02/06/2010 (in 494 days), Seats: 1 (Actual: 0), Status: U

Compiere Professional: Not Licensed

Check entries and press OK to submit.

Start Migration

Check License

Tip: If you get the “Core Invalid” error after selecting the ‘Check License’ button, that is an indication that you did not select the appropriate action for the Core component in step #5. In this case, Exit the setup and support windows and execute RUN_setup again selecting the Core plus any other components to install.

12) Click on “Start Migration”.

Compiere Support 3.2.0

System Name: compiere

Registered EMail: js@compiere.com

Support EMail:

Target URL: jdbc:oracle:thin:@//lap-js-new:1E

Support Expires: 2010-02-06 00:00:00.0

Source URL: file:/c:/compiere2/data/compiere

Source UserID:

System Status: Evaluation

Password:

Support Units: 0

Supported Users:

Support Level:

Existing Support Contract

Compiere Warehouse Management: Compliant, Expires 02/06/2010 (in 494 days), Seats: 1 (Actual: 0)

Compiere Manufacturing: Compliant, Expires 02/06/2010 (in 494 days), Seats: 1 (Actual: 0)

Compiere End User Layer: Compliant, Expires 02/06/2010 (in 494 days), Seats: 1 (Actual: 0)

Compiere Warehouse Management Information updated.

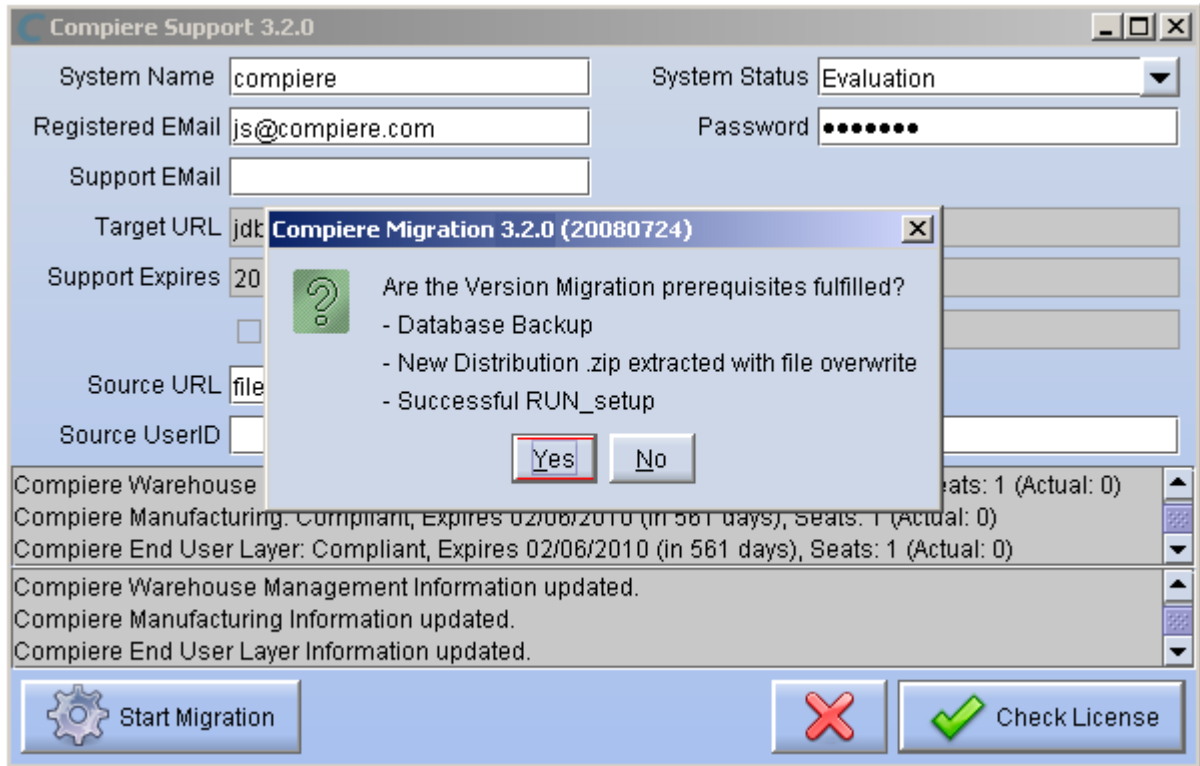
Compiere Manufacturing Information updated.

Compiere End User Layer Information updated.

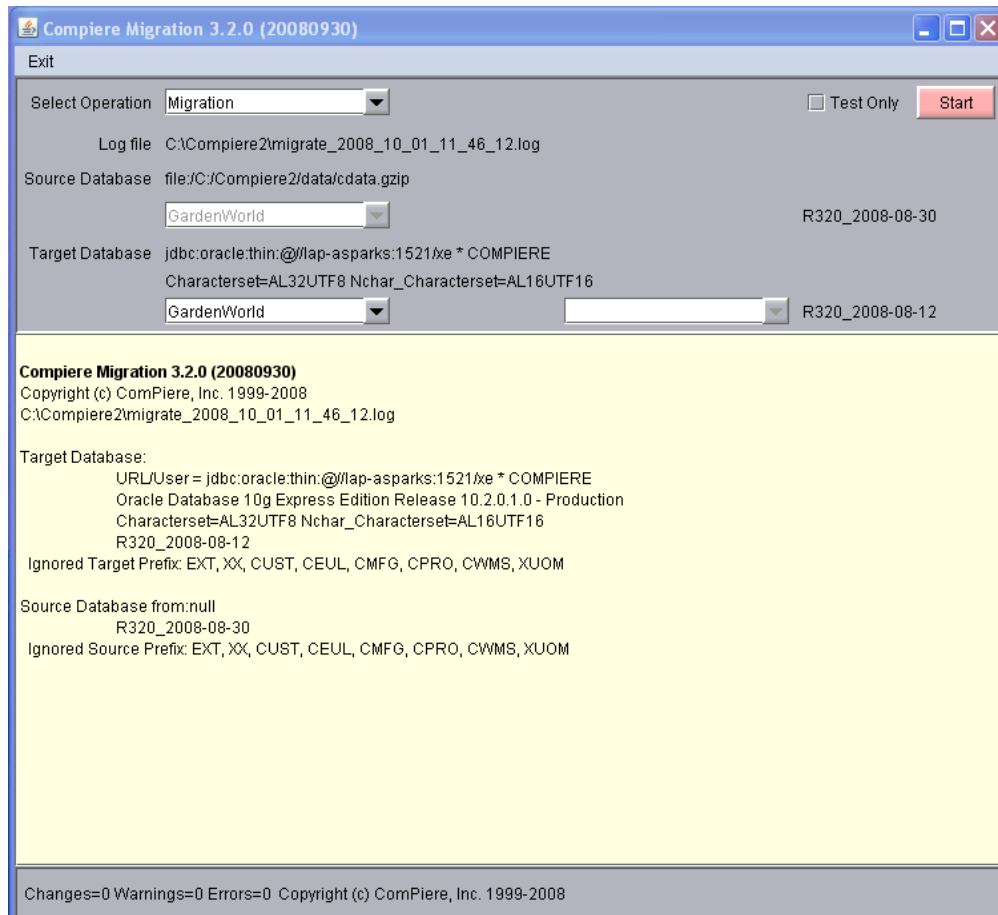
Start Migration

Check License

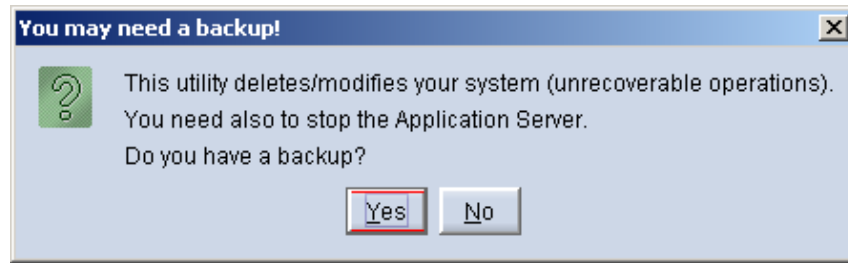
13) At the Compiere Version Migration Prompt, click “Yes” to proceed with the Migration.



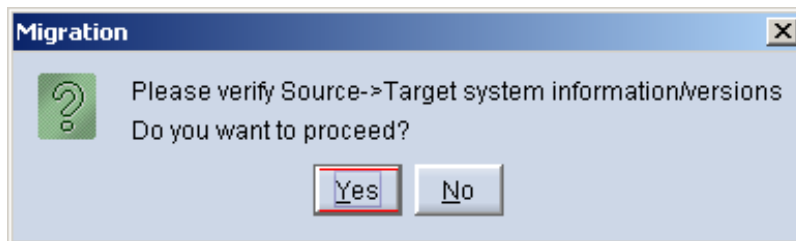
14) Unselect the “Test Only” option, and click Start.



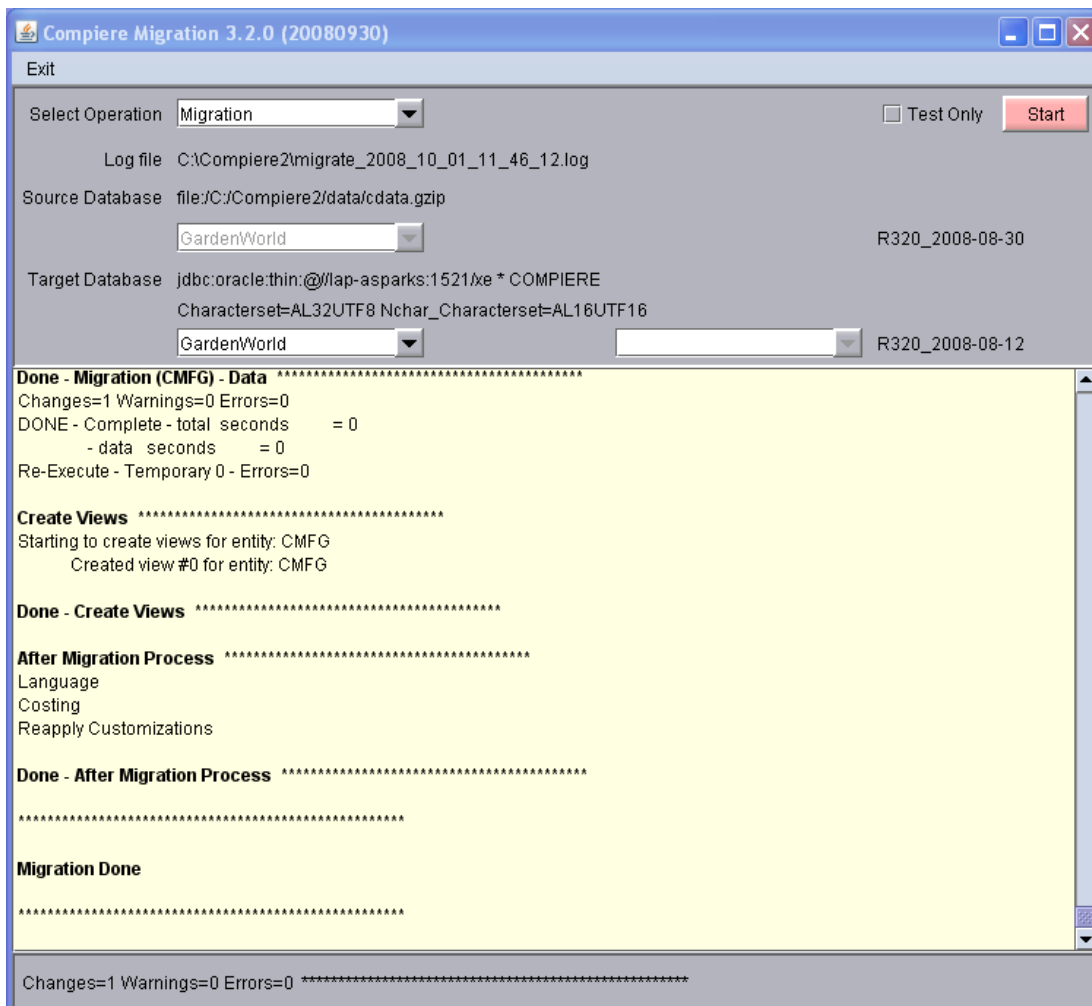
15) Confirm that you have a current back up of your database



16) Confirm that the Source and Target database versions from the Compiere Version Migration window are correct.



17) Verify that the migration finish with no errors and the message “**After Migration - DONE**” is displayed. In case you get any errors, please be sure to review the list of known issues listed in this document before logging a service request.



18) Verify the following log files for errors:

- a. migrate_2009-mm-dd_hh_mi_ss.log: complete log
- b. migrate_2009-mm-dd_hh_mi_ss.err.log: subset of log with just errors
- c. 2009-mm-dd_#.log: possible additional errors not printed to the migration log. (search for the file with the text "Compiere Migration 3.4")

19) If you have a Compiere Professional Edition license, execute **utils/RUN_Support** and click "Check License" to activate your license.

Tip: There is no need to click the start migration button.

20) After you have pressed the Check License button you should be able to see if your Professional License has been activated.

21) After Compiere Professional license has been updated you may click the "X" to close the window.

Hint: It is NOT necessary to click the Start Migration at this point.

22) Start the Apps Server using the script `utils/RUN_Server2`

23) To start Compiere in the Web UI after migration, it is required that all Web UI users clear their browser cache first.

Note: After migration, (re-) apply the language packs when needed.

• Post Migration Steps for RMA/RTV

This step is only relevant if you plan to use the new returns functionality and you are **migrating from 2.6.3 or older**.

Compiere now has explicit return transactions. We discontinued the previously seeded "Return Material" functionality.

In the "Document Type" window you need to do the following for every Tenant/Client:

1) Delete or de-activate the document types

- Return Material
- MM Customer Return
Hint: This is discontinued functionality

If you choose to deactivate the obsolete document types (as opposed to deleting them), please rename the document type 'MM Customer Return' to an alternate name (For eg., ' ** MM Customer Return ** Do Not Use **') so you can successfully create the new document types detailed below.

2) Create Return Document Types

- MM Vendor Return
 - Copy "MM Receipt" and set Name
 - Select Return Transaction
 - De-Select Counter Document flags
 - Optionally select Confirmations
- Vendor RMA
 - Copy "Purchase Order" and set Name
 - Select Return Transaction
 - De-Select Counter Document flags
- MM Customer Return
 - Copy "MM Shipment" and set Name
 - Select Return Transaction
 - De-Select Counter Document flags
 - Optionally create a special Document Sequence and or Confirmations
- Customer RMA (Copy Standard Order)
 - Copy "Standard Order" and set Name
 - Select Return Transaction
 - De-Select Counter Document flags
 - Select AR Credit Memo for Invoice Document Type
 - Select the created MM Customer Return for Shipment Document Type
 - Optionally create a special Document Sequence

Unfortunately, we cannot do the above steps automatically as this is configuration specific user data.

Tip: For an example of a set-up, please check GardenWorld in a fresh install or in a newly created Tenant.

Appendix B

Compiere 3.4 – Installation Instructions

Compiere 3.4 Installation Instructions

This is for a new installation of Compiere. If you already have installed a previous version of Compiere, please refer to the Migration instructions.

• Prerequisites

- Database Oracle XE, Oracle 10gR2, Oracle 11g or EnterpriseDB Postgres Plus Advanced Server 8.3.
- Important:** It is mandatory to use a Unicode character set
- Database approved Linux Operating System, Windows 2003 or Windows XP
- Disk Space: > 5 GB (includes database)
- Swap Space: > 1GB
- Memory: > 512 MB - Recommended: > 1 GB
- TCP/IP connection
- Network setup with DNS server and a domain.
- Tip:** Do not use IP addresses.
- Internet access

Hint: Notice that the screenshots in this document refer to the installation on Windows, but the process is the same for Linux, except for the paths (e.g. C:\Compiere2 vs. /Compiere2) and the extension of the scripts (.bat vs. .sh)

• Database Installation

Install Database – For the instructions on how to install Oracle XE and EnterpriseDB on Windows and Linux please use the install guide on the Compiere website <http://www.compiere.org/support/installation.php>.

If you are using Oracle XE you need to modify the following database parameters:

- Start SQL*Plus (Start => Programs => Oracle Database 10g Express Edition => Run SQL Command Line)
- connect system/compiere
- alter system set processes=100 scope=spfile;
- alter system set sessions=100 scope=spfile;
- Re-start the database (Start => Programs => Oracle Database 10g Express Edition => Stop DB & then Start DB)

• Java Installation

1. Download and install [Sun Java JDK 6](#) (SDK), update 5 or higher.
Important: The Compiere Server requires the JDK (not just JRE).
2. For installation instructions see the JDK section on this page: <http://java.sun.com/javase/6/webnotes/install/index.html>

• Download Compiere

3. Install /Setup Compiere Server (this includes the Client as well)
 - 1) Download the current version of Compiere: [Web Store](#) (for current customers) or free [Community Edition and Professional Trials](#).
 - 2) Extract the .zip file. The steps shown assume that you extract to the root directory, resulting in a COMPIERE_HOME of C:\Compiere2 in Windows or /Compiere2 in Linux.
 - 3) Verify that the bin directory for your database executables is included in the PATH. Also, if using Oracle XE on Linux, run \$ORACLE_HOME/bin/oracle_env.sh.

To update the PATH in Windows, right click on My Computer and choose Properties. Then move to the advanced tab and click on Environment Variables. Find the PATH variable and click Edit.

- 4) Verify that the path to the JAVA_HOME is set up in the Environment Variables.

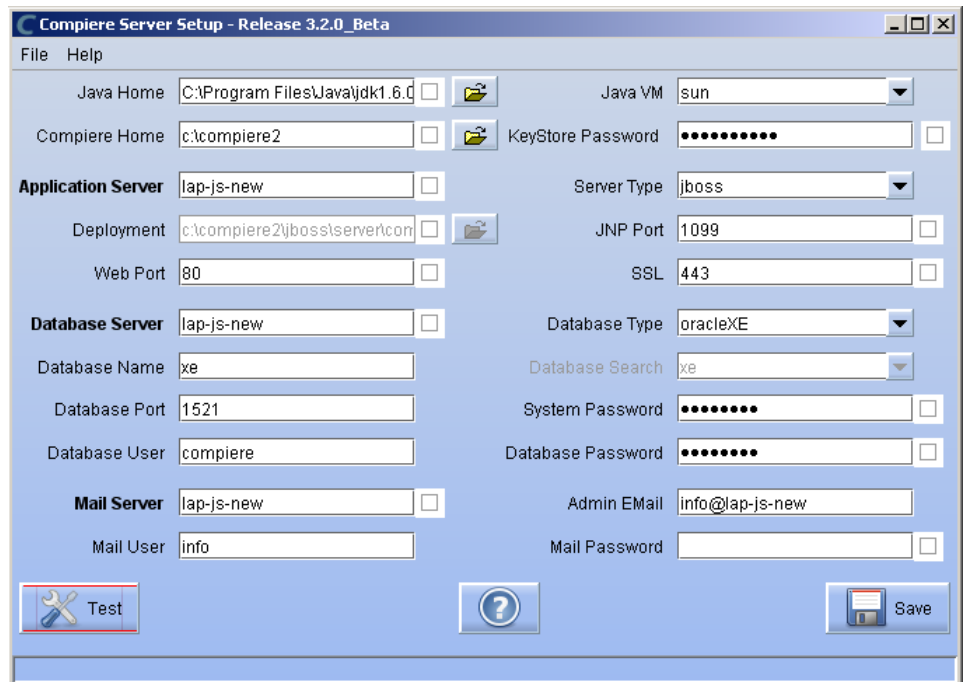
To update the JAVA_HOME in Windows, right click on My Computer and choose Properties. Then move to the advanced tab and click on Environment Variables. Find the JAVA_HOME variable and click Edit.

- 5) Execute the script \$COMPIERE_HOME/RUN_Setup.

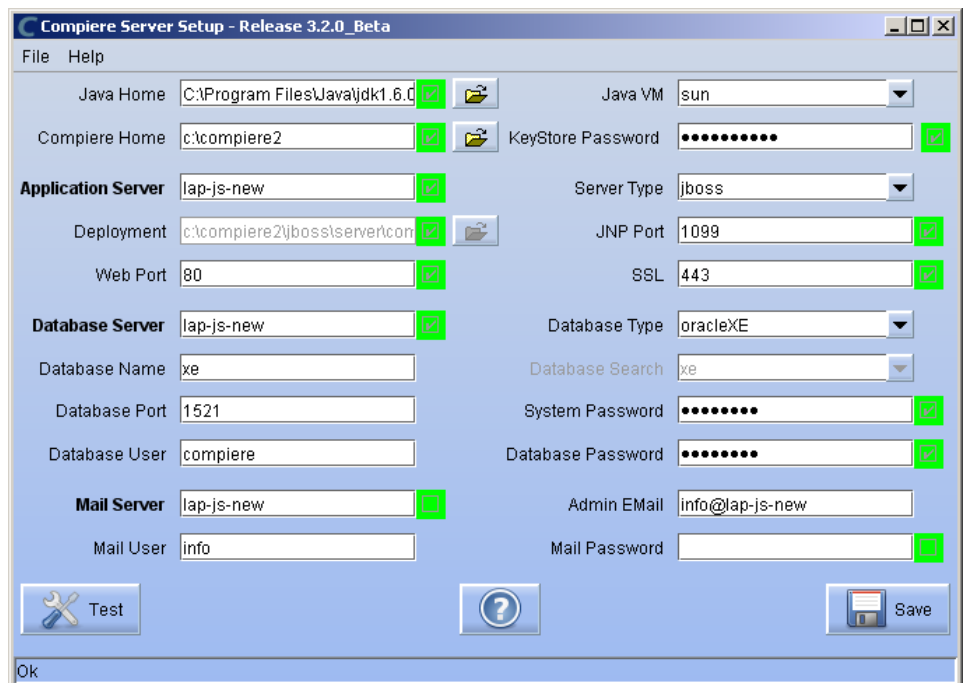
Tip: if the following window does not display, please ensure that the following are updated.

- Add the bin folder where you have installed JDK 1.6 at the beginning of the **PATH** system environment variable.
- Set the JAVA_HOME system variable to the location of your java installation (e.g., 'C:\Program Files\Java\jdk1.6.0_05')
- Set the COMPIERE_HOME system variable to the path of your Compiere installation (e.g., 'C:\Compiere2')

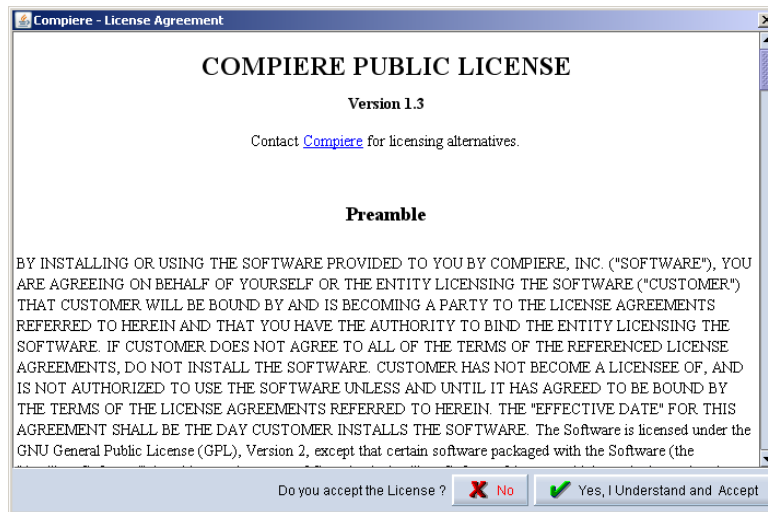
- 6) Select Database Type Oracle XE, Oracle (for Standard or Enterprise Editions) or PostgreSQL (for EnterpriseDB).
- 7) For System Password, enter the System database User password.
- 8) For Database Password, enter the Compiere database user password, (e.g. 'compiere')
- 9) For Server Names, i.e., Application, Database and Mail, use the DNS name of the server. **Hint:** Do not use localhost (127.0.0.1) or IP addresses.



- 10) Enter or update any other parameters as necessary.
- 11) Select the Help button, for information on any field.
- 12) Select the Test button to check the parameters. **Tip:** The parameters will only save after they have been verified.
- 13) If an entry is unverifiable, it will display with a red X. Correct the entry and re-select Test.
- 14) Once all fields are verified, click the Save button to proceed.



- 15) The Compiere Public License Opens. Click “Yes, I understand and Accept” to continue.



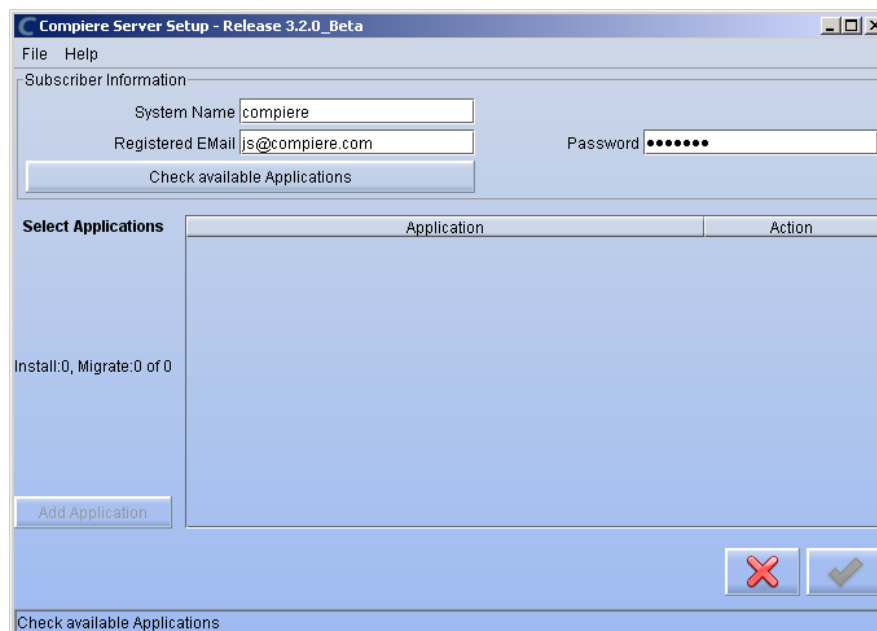
- 16) The following prompt will display describing your new Security Key. Click ‘Ok’ to continue.



- 17) The Next step is to provide the Subscriber Information. Current customers should provide the subscriber information (System Name, Email and Password) exactly as it was registered in the Compiere Web Store to get a complete list of applications.

Click Check Available Applications to get a list of applications that are available to be installed.

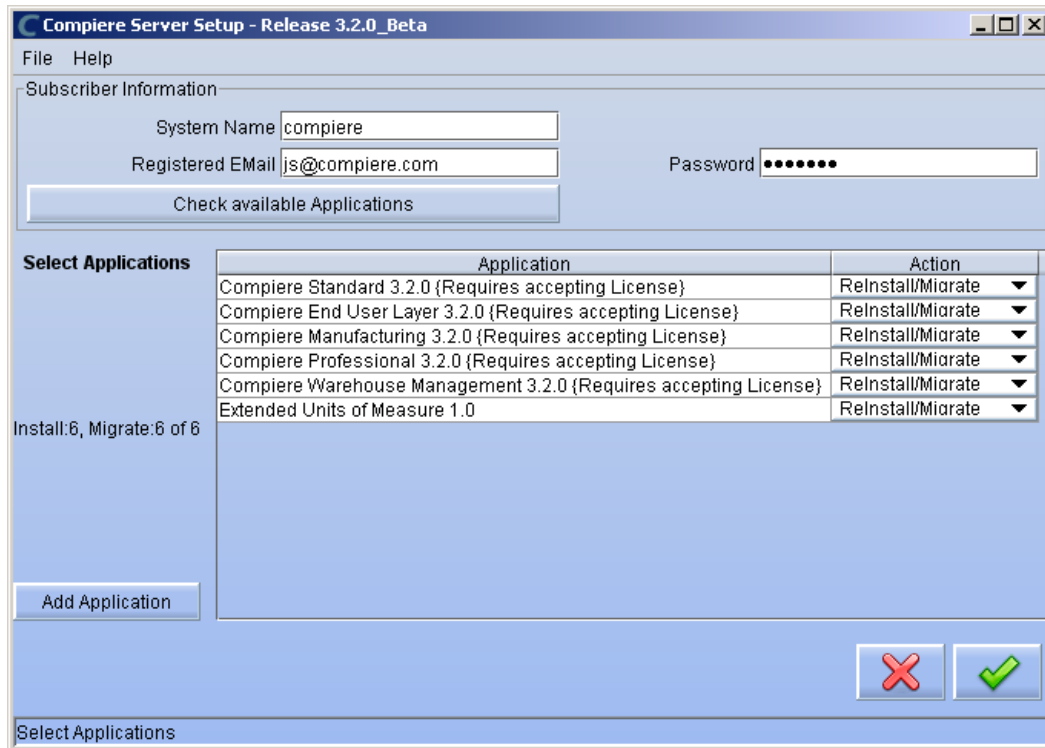
Tip: Community Edition users may leave the fields blank and click “Check available components” to install the Community Edition.



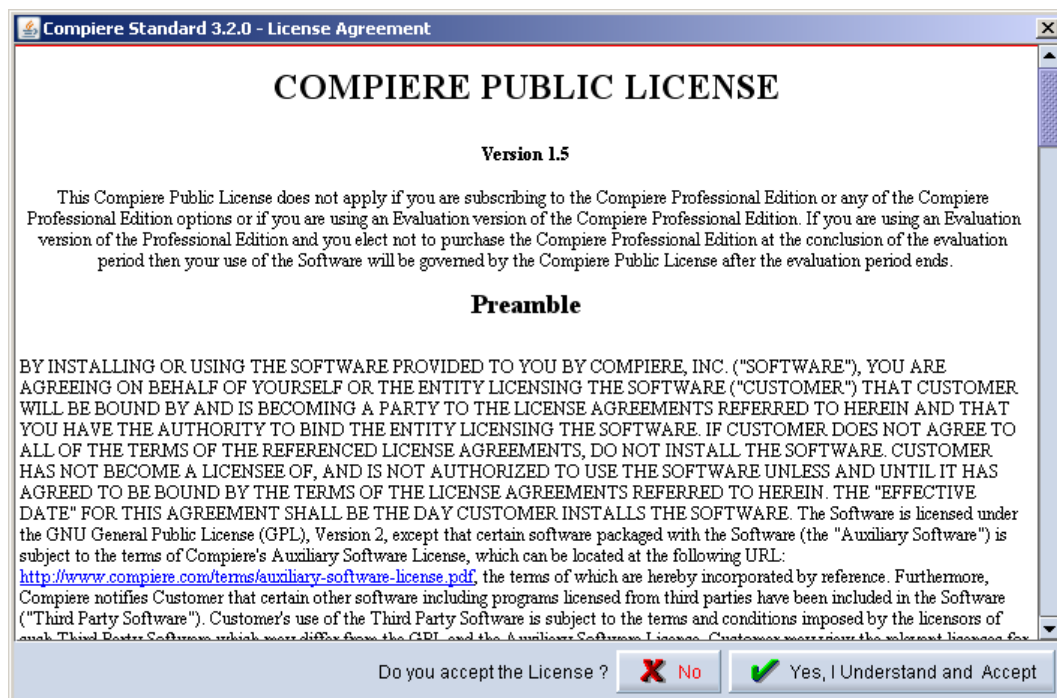
- 18) Select the applications that you would like to install. You can include additional applications by using the button Add Application.

By default all available applications will be installed. If you do not wish to install one of them you should change the action field from "New Install" to "-None-". Notice that Compiere Core is a *Mandatory Prerequisite* and must be selected.

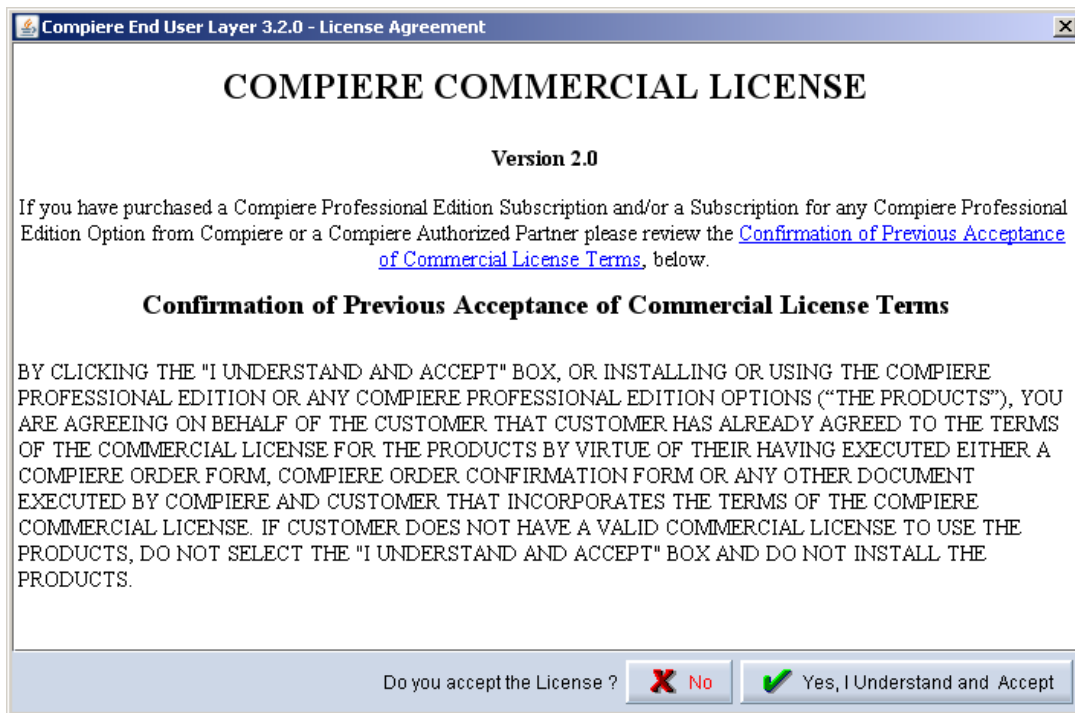
Select the OK button to continue



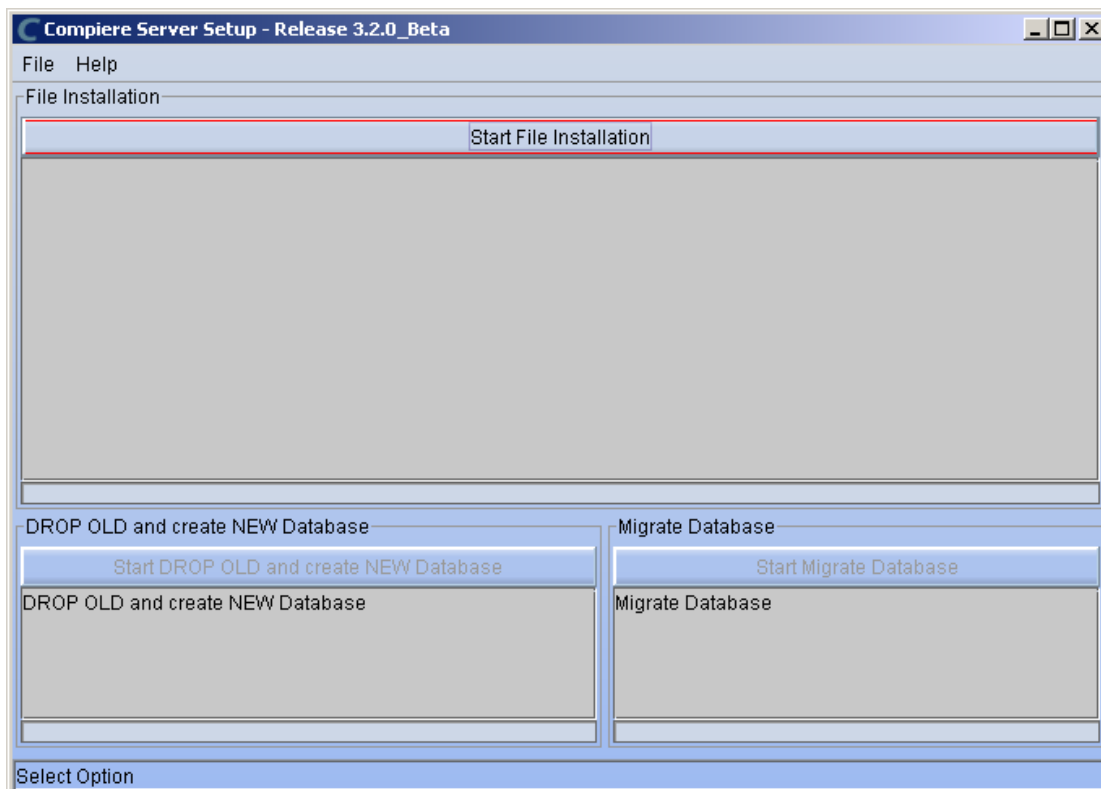
- 19) Next, read and accept the Compiere Public License agreement.
Hint: You might get more than one license agreement, depending on the applications that you are installing.



- 20) Then read and accept the Compiere Commercial License agreement.
Hint: You might get more than one license agreement, depending on the applications that you are installing.



- 21) After accepting the license agreement the following window will display:

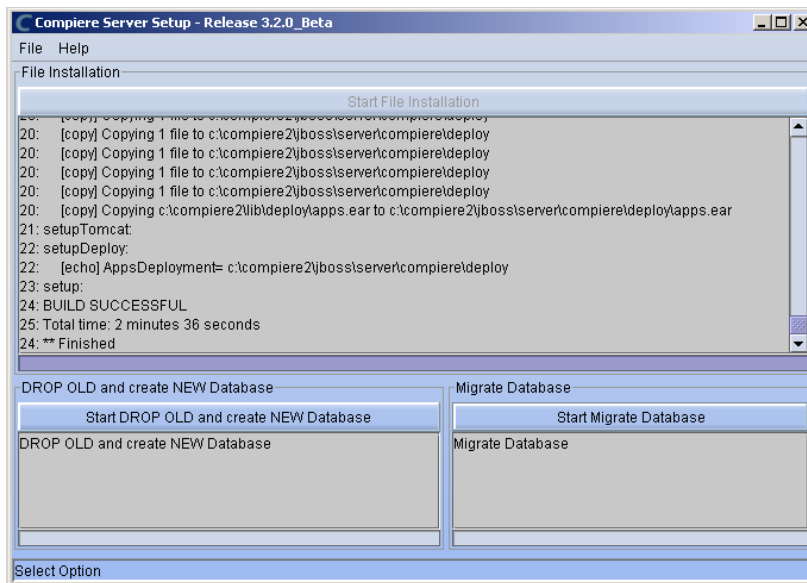


- 22) Select Start File Installation.

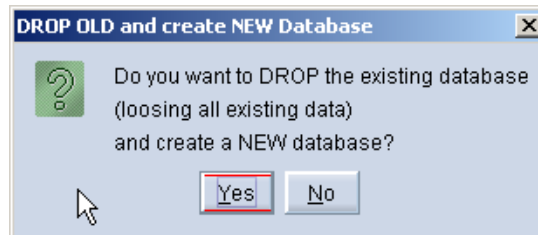
Important: At this point, you must be connected to the internet to continue or the installation will not succeed.

23) Once the file installation is complete, select Start Create New Database.

Note: If you already have a Compiere database in your system, you will be presented with a split panel after 'Start Server Install'. Click the left panel (Start DROP OLD and create NEW Database) if you want to replace the existing database with the new database.

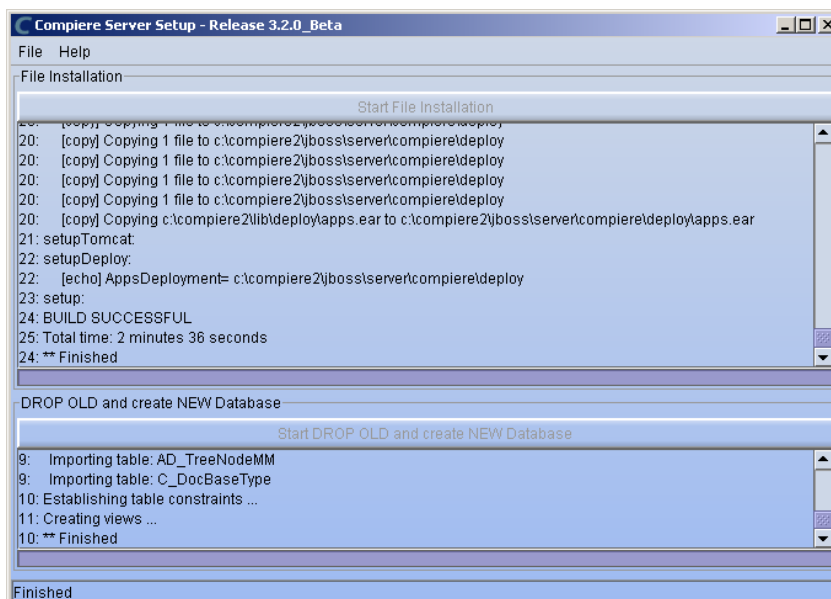


24) At the prompt select 'Yes' to Drop the existing Database and create a new database.



Warning: If you choose to replace the existing database, all data in the existing database will be removed.

25) Verify that you see a '10: ** Finished' message at the end of this step. Then a new window should pop-up to do the license validation.



26) The Compiere Support window opens. Complete the necessary fields in order to validate your assets.

Hint: If you only intend to use the Community Edition of Compiere 3.0, you may skip the following steps and go to the Application Server section.

Important: For customers with a valid support contract with Compiere, this is a required step to ensure that the features associated with the support level are enabled. If you are a customer and do not have a web store login, please contact your system administrator or Compiere Support first. If you are not a customer and would like to obtain a trial license for the Professional Edition, please [Contact Us](#) and request the files for the Professional Edition.

27) Provide the following information exactly as it was registered in the Compiere Web store and click Check License to validate your asset information.

- System Name (name provided in the web store registration)
- Registered Email (email address provided in the web store registration)
- Password (web store password)

28) To verify your license, click the “Check License” button.

Tip: Do not click Start Migration.

Notice that internet access is required to validate the license information.

- 29) Next, review that your license information has been validated. If you have a trial license for Compiere Professional, but you currently don't have a license with Compiere, you will see that the license for Standard is invalid. This is expected as the trial doesn't include Standard and you may ignore the error.

- 30) After Compiere Professional license has been verified, click the "X" to close the window.

Note: If you get the error "You do not have an appropriate license to use this feature" when starting the web UI, then login to the server and execute `utils/RUN_Support` to validate again your license and restart the application server. When using the Swing client, ensure that your database connection information matches exactly the information in the target URL in `RUN_Support` (including the fully qualified server name)

- 31) Close any additional Setup and /or Support windows.

• Run Application Server

4. Start the Compiere Application Server

- 1) Execute `utils/RUN_Server2`.
- 2) There should be no errors. Check the logs in `$COMPIERE_HOME/jboss/server/compiere/log` to verify this.
- 3) Common problems include ports already in use:
 - 17:41:09,085 ERROR [NamingService] Could not start on port 1099
java.net.BindException: Address already in use:
JVM_Bind at java.net.PlainSocketImpl.socketBind(Native Method)
 - There is another program using port 1099; Stop it and restart `Run_Server2` or setup Compiere to use another port in `RUN_setup`.

Likely port conflicts:

- 80 - Other web server running (or you need privileges under Linux/Unix)
- 8080 – Used by Oracle Database
- 1099 - Often used by IDEs for debugging, or by internet messengers (Skype, Gtalk, etc.)

• Start Compiere

5. Start the Compiere Client.

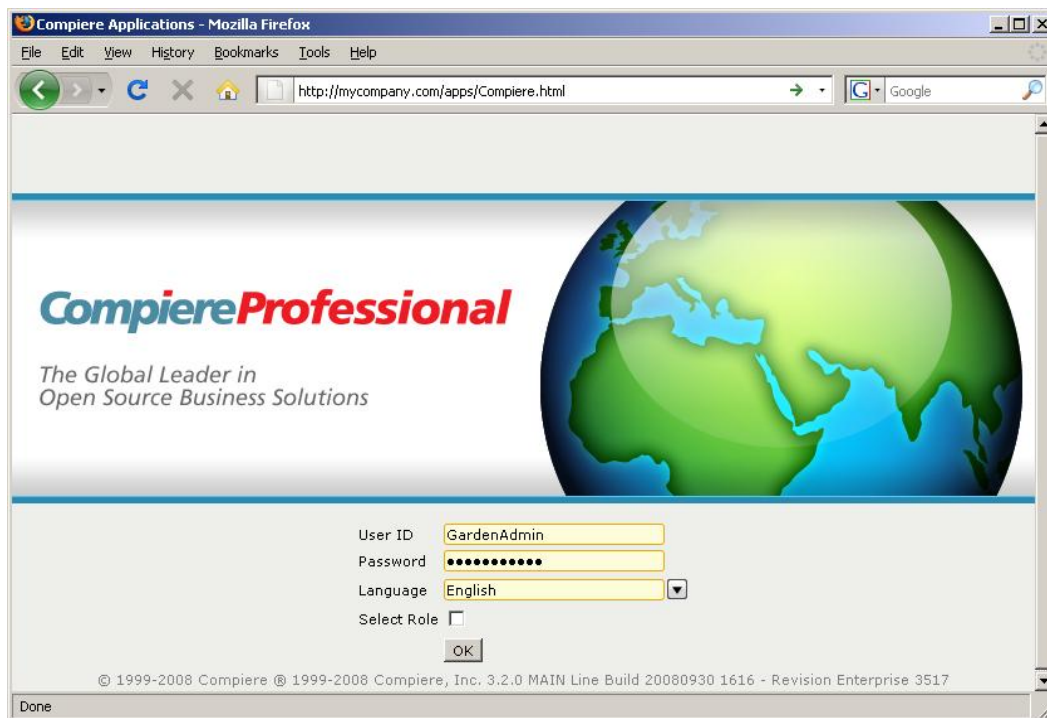
- 1) Start the Swing client by double clicking on the Compiere shortcut in your desktop or by executing **RUN_Compiere2** from the \$COMPIERE_HOME directory.

Default users and passwords for the sample Garden World application:

- GardenUser/GardenUser
- GardenAdmin/GardenAdmin
- System/System
- SuperUser/System



- 2) Alternatively, if you have access to the Professional Edition, you can launch the application from the browser by using the URL: <http://server:port/apps>, (e.g. <http://mycompany.com:80/apps>.)
Tip: For optimal performance, the Firefox browser is recommended for using the Compiere Web User Interface.



Information: For additional information see the Compiere home page <http://www.compiere.com>.

Appendix C

Compiere 3.4 – Application Extensions

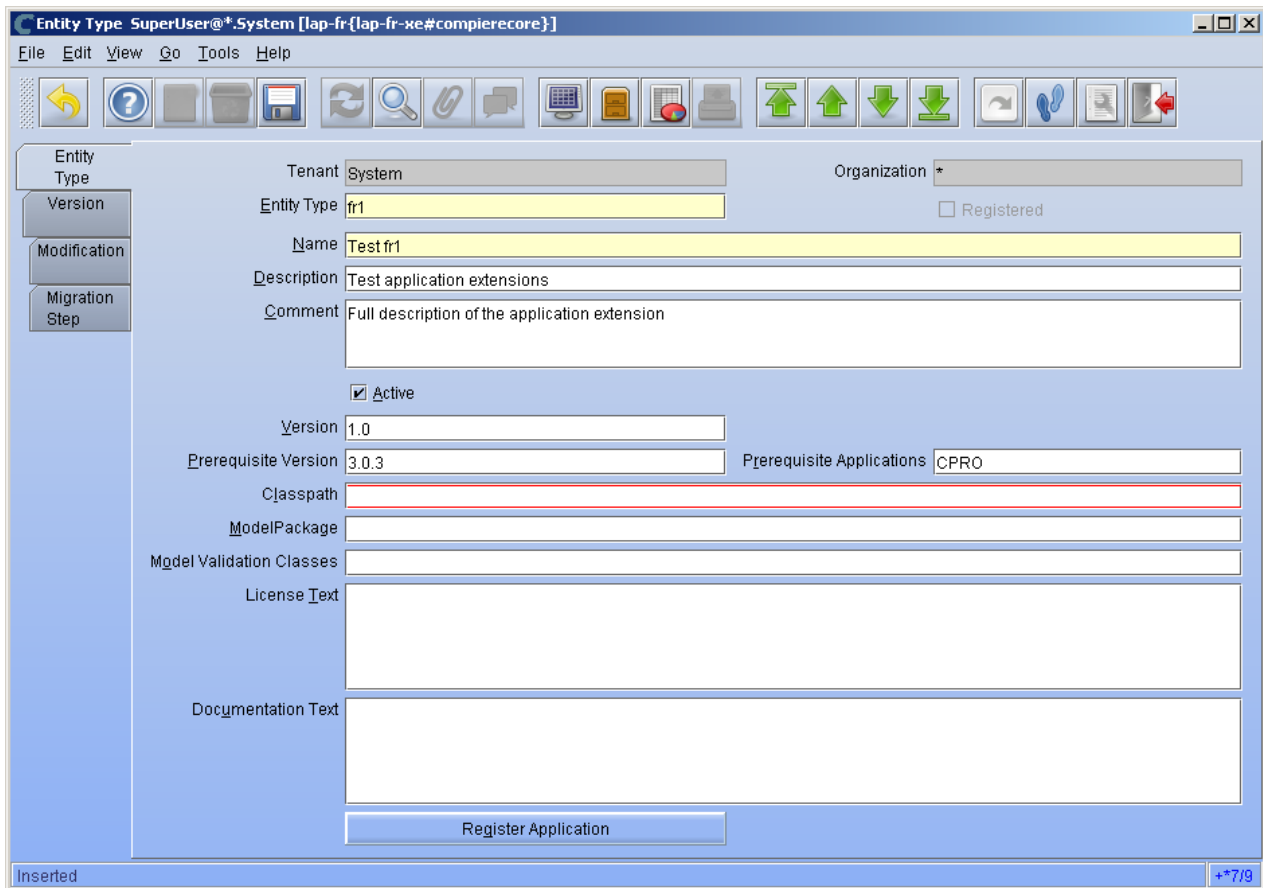
Compiere 3.4 Application Extensions - Compiere Partners

This section is for Application Extensions in Compiere available as functionality in 3.4 is for Partners only. This framework will allow Partners to create application extensions that include both reference data and code, and can be distributed to their customers through Compiere.

• Registration of Application Extensions – Application Provider (Partner)

Use the steps below to register for Application Extensions:

- 1) To register an Application Extension, log a Support Request with Compiere.
- 2) Login with the System Administrator role.
- 3) Open the Entity Type window (Application Dictionary => Entity Type) and create a new record.



The screenshot shows the 'Entity Type' window in Compiere. The window title is 'Entity Type SuperUser@*.System [lap-fr-{lap-fr-xe#compierecore}]'. The menu bar includes File, Edit, View, Go, Tools, and Help. The toolbar contains various icons for navigation and actions. The main form area is divided into several sections:

- Entity Type:** Tenant: System, Organization: * (dropdown), Entity Type: fr1, Registered:
- Name:** Test fr1
- Description:** Test application extensions
- Comment:** Full description of the application extension
- Active:**
- Version:** 1.0
- Prerequisite Version:** 3.0.3
- Prerequisite Applications:** CPRO
- Classpath:** (empty field)
- ModelPackage:** (empty field)
- Model Validation Classes:** (empty field)
- License Text:** (empty field)
- Documentation Text:** (empty field)

At the bottom of the form is a 'Register Application' button. The status bar at the bottom left shows 'Inserted' and the bottom right shows '+*7/9'.

Hint: Be careful not to modify the entities C, D, CPRO or XUOM.

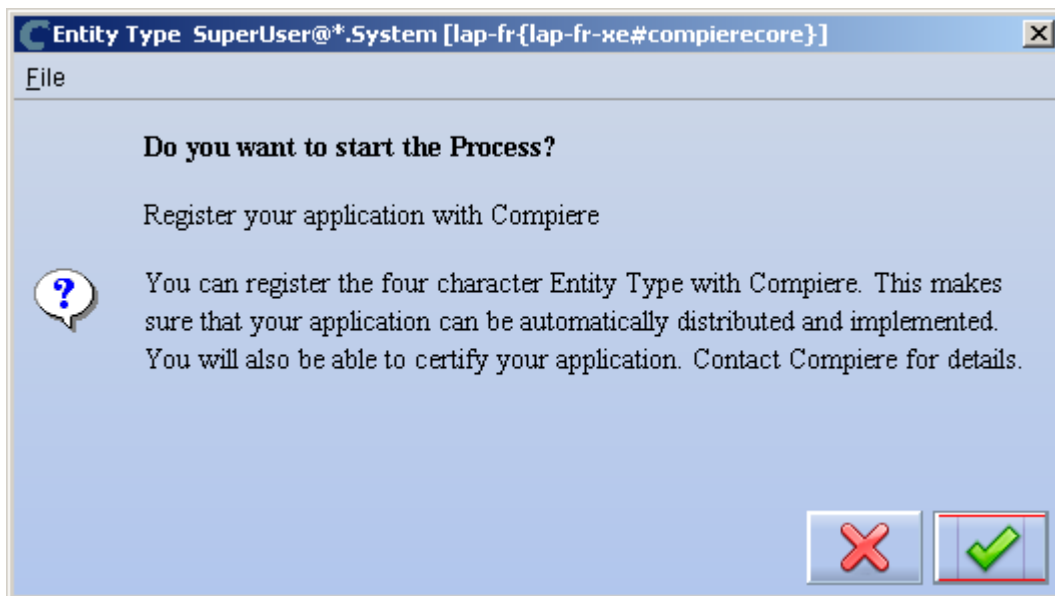
Important: Complete all the mandatory fields. For entity type, notice that names beginning with “C” and “X” are reserved for Compiere and you must use four characters.

Comments about optional fields:

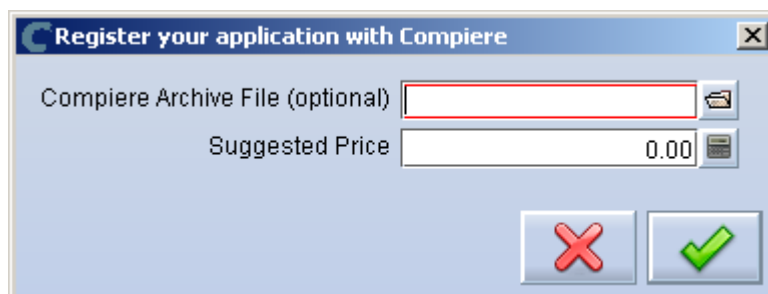
- Version: The version of your extension. Usually 1.0 for the first version.
 - Prerequisite version: The Compiere Core version that is required for this extension, e.g. 3.3.0. You need to use the exact text as defined for the entity type D.
 - Prerequisite applications: The entity type of the applications that need to be installed in order to install this extension. For example, set it to CPRO if the extension must be applied on top of the professional edition.
 - Classpath: List of additional jar files required for this extension.
 - Model package: Specific model package from the jar files listed in the classpath field.
- 4) You do not need to enter any information on the Version, Modification, or Migration Step tabs.
 - 5) Ensure that your System window contains your up to date information for your system and web store email/password information.
 - 6) Click "Register Application" to send your request to Compiere.

Tip: If an entity type with the same name has already been registered you'll get an error "Error: Already registered: XXXX". You will have to create a new record with the new entity type. Verify with Compiere that the new entity type that you plan to use is available.

- 7) Click 'Ok' to start process.



- 8) Leave the defaults in place and click 'Ok' to continue.



- 9) At this point the status will be pending approval from Compiere. Please log a support request in our case management system requesting the approval of your component.

• Creation of Application .car file – Application Provider (Partner)

Follow the steps below to create the Application.car file:

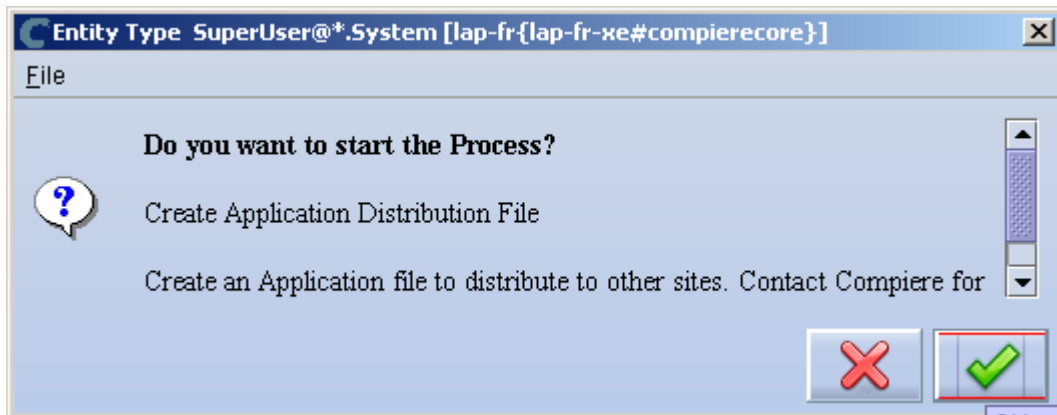
- 1) Make all the application dictionary changes using the entity type that you registered in the previous step.
- 2) Generate jar files for the custom code required by your extension.
- 3) After having your new Entity Type approved by Compiere; login to Compiere with the System Administrator role and query the entity type that you registered in the previous step and click “Create Application File.”

The screenshot shows the 'Entity Type' configuration window in Compiere. The window title is 'Entity Type SuperUser@*.System [lap-fr-{lap-fr-xe#compierecore}]'. The interface includes a menu bar (File, Edit, View, Go, Tools, Help) and a toolbar with various icons. On the left, there is a sidebar with buttons for 'Entity Type', 'Version', 'Modification', and 'Migration Step'. The main area contains the following fields and controls:

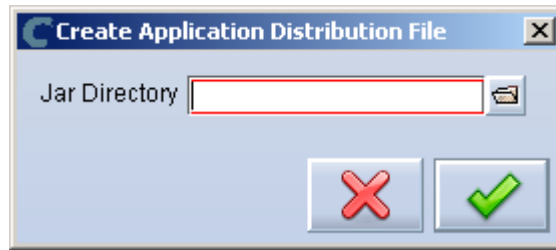
- Tenant: System
- Organization: *
- Entity Type: LFR1 (with a checked 'Registered' box)
- Name: Test fr1
- Description: Test application extensions
- Comment: Full description of the application extension
- Active
- Version: 1.0
- Prerequisite Version: 3.0.3
- Prerequisite Applications: CPRO
- Classpath: lfr1_code.jar
- ModelPackage: (empty)
- Model Validation Classes: (empty)
- License Text: (empty)
- Documentation Text: (empty)

At the bottom, there are two buttons: 'Register Application' and 'Create Application File'. A status bar at the bottom left says 'Record saved' and the bottom right shows '7/9'.

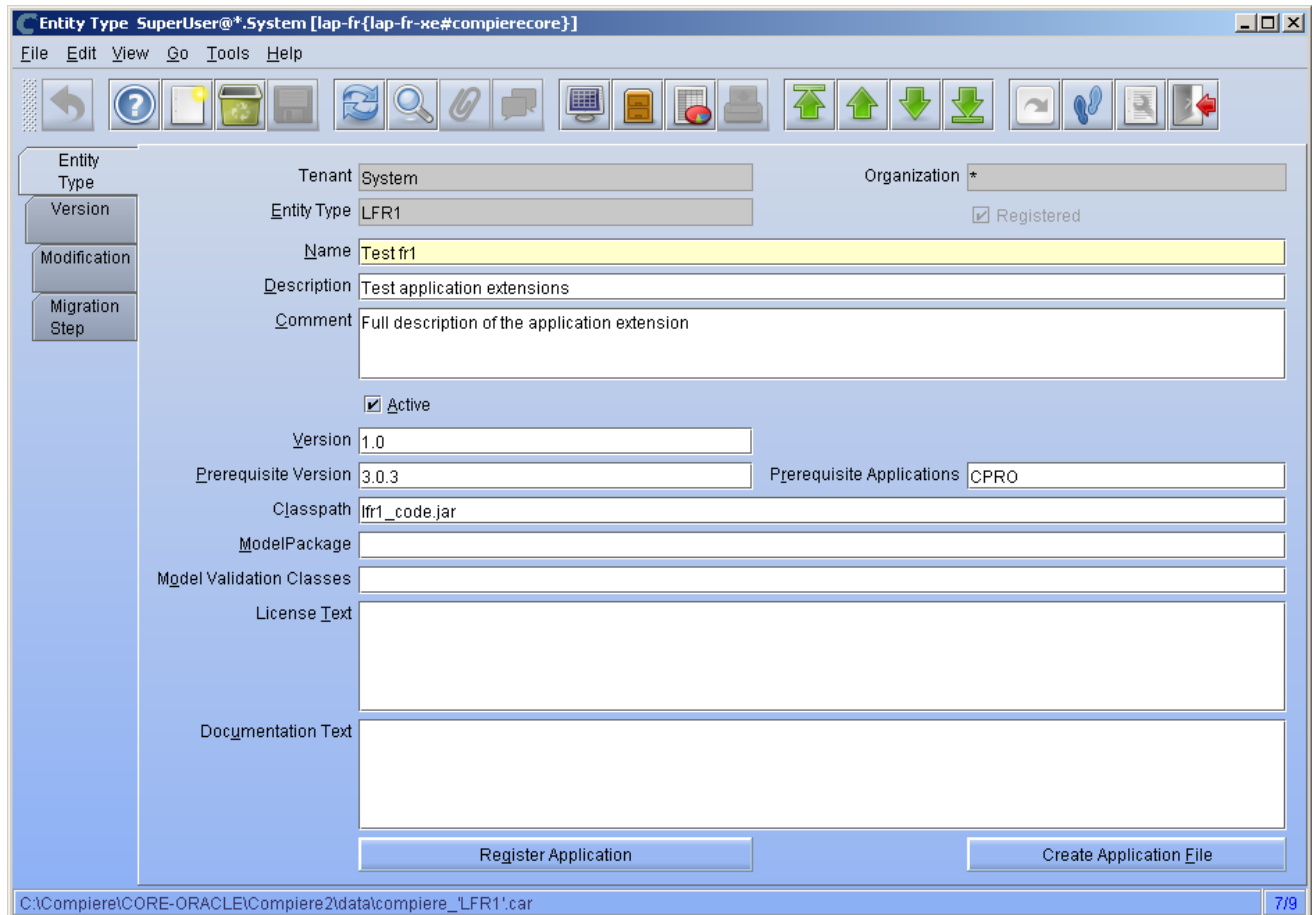
- 4) Click 'Ok' to start process.



- 5) Provide the directory for the jar file listed in the field classpath.



- 6) The car file will be generated in the COMPIERE_HOME/data directory. The newly generated .car file will have a name of compiere_XXXX.car.



Important: The naming convention for .car files has changed, (e.g. compiere_'CPRO'.car from 3.0 and 3.1 is now compiere_CPRO.car in 3.3, i.e. without quotes in the file name). If a customer unzips the Compiere installation files into the same directory, it is possible to end up with both compiere_'CPRO'.car as well as compiere_CPRO.car. This in turn will cause Compiere Professional to show up twice in the installation window. To avoid this situation, customers will need to manually delete compiere_'CPRO'.car and compiere_'XUOM'.car from COMPIERE_HOME/data directory. These are the only two .car files that Compiere has distributed prior to 3.2. If a customer has created any additional .car files prior to 3.2, it is necessary to follow the same procedure for those .car files as well.

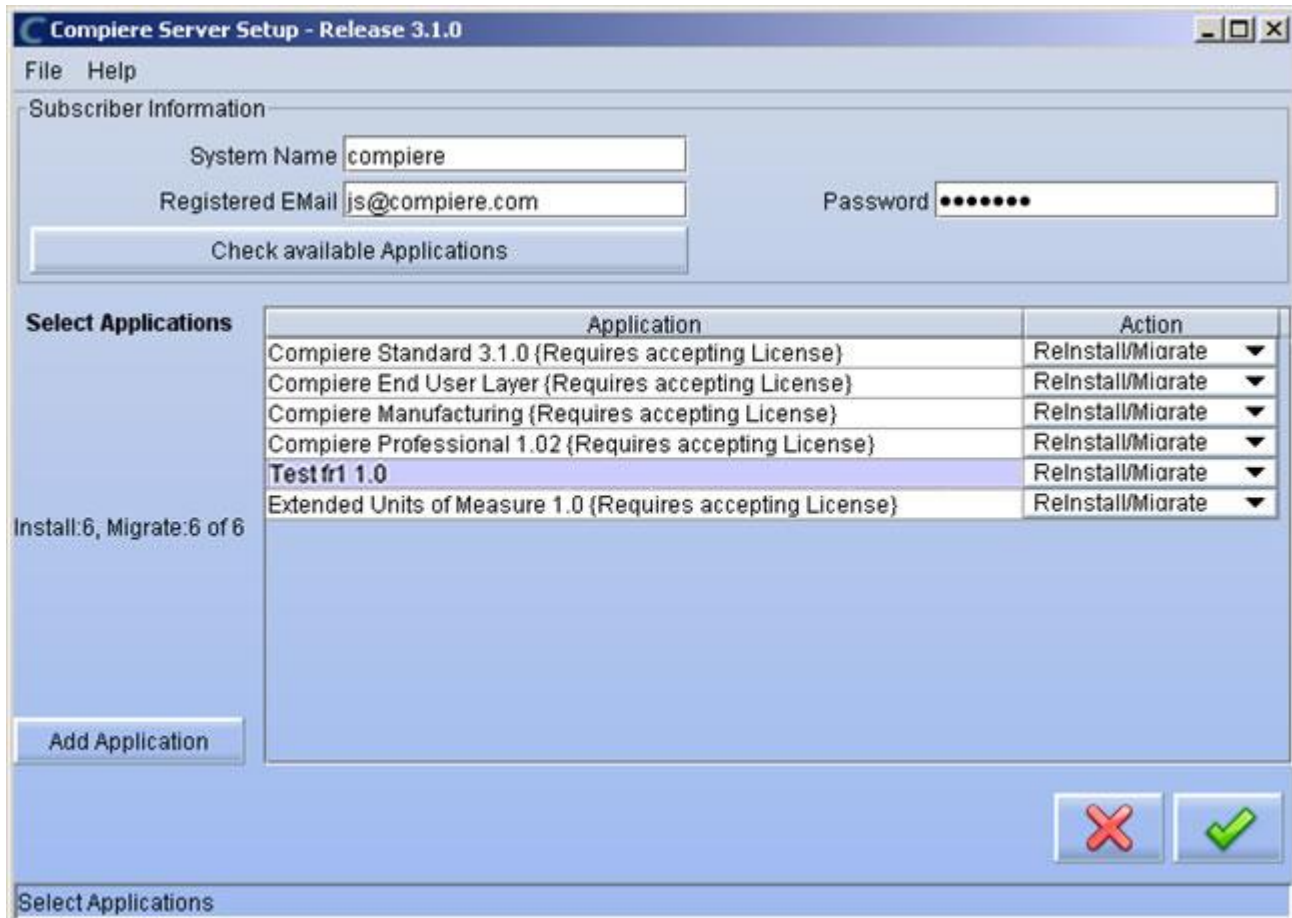
• Installation – Application Consumer (Customer)

Follow the steps below to install the Application:

- 1) After obtaining the car file for the application extension, copy it to the directory COMPIERE_HOME/data.
- 2) Execute RUN_Setup (see Appendix A for details on the setup information.)

Important: Be sure to have internet connection available to be able to get the license terms for the application extensions that you plan to install.

- 3) When you get to the window to select the applications, besides the application extension that you need to install, also select the option Reinstall/Migrate for Compiere Core 3.3.



- 4) Then continue with the MIGRATION steps as usual. (See Appendix A for more details.)

Appendix D

Compiere 3.4 – Command Line Scripts

Command Line Scripts

Scripts are provided in the \$COMPIERE_HOME/utils/CommandLine directory for experienced Compiere users who would like to perform Compiere instance creation and maintenance via command line or using automated scripts

CLInstall

Purpose: To create a new Compiere installation. When this script is run a new Compiere instance is created on the database specified via configuration file. Please note that existing Compiere database instance is dropped and a fresh new Compiere instance is created when this script is run.

The script validates the components that can be installed against Compiere License server and hence need to be connected to internet while running and have the appropriate license to allow you to install the components. The script also updates the License information after the instance is created.

All the component .car files present in \$COMPIERE_HOME/data will be installed

1) Environment Variables \$COMPIERE_HOME, \$JAVA_HOME need to be set.

2) The configuration parameters to CLInstall are provided via a configuration file. A template CLConfiguartionTemplate is provided in the same directory, which you can make a copy and edit the configuration parameters for your specific installation. All the parameters have one to one correspondence with the parameters on the first window that comes up when running RUN_setup

Subscriber information for License validation: CL_SYSTEM_NAME, CL_WEBSTORE_EMAIL, CL_WEBSTORE_PASS

Homes: CL_COMPIERE_HOME, CL_JAVA_HOME, CL_JAVA_TYPE

Database: CL_COMPIERE_DB_TYPE, CL_COMPIERE_DB_SERVER, CL_COMPIERE_DB_PORT,
CL_COMPIERE_DB_NAME, CL_COMPIERE_DB_SYSTEM, CL_COMPIERE_DB_USER,
CL_COMPIERE_DB_PASSWORD

Apps Server: CL_COMPIERE_APPS_TYPE, CL_COMPIERE_APPS_SERVER, CL_APPS_SERVER_DEPLOY_DIR,
CL_COMPIERE_JNP_PORT, CL_COMPIERE_WEB_PORT

SSL Settings: CL_COMPIERE_SSL_PORT, CL_COMPIERE_KEYSTOREPASS

Mail: CL_MAIL_SERVER, CL_ADMIN_EMAIL, CL_MAIL_USER, CL_MAIL_PASSWORD

3) Running:

CLInstall takes in the configuration file as a parameter.

Sample Usage: >CLInstall.bat CLConf.bat

Errors while running the script are displayed onto the console window and are also written to log files within the same directory.

CLMigrate

This is very similar to CLInstall.bat except that it performs the migration of a Compiere instance instead of dropping and recreating a new instance.

CLUpdateLicense

This script can be run to update the license information instead of executing RUN_Support. The script can be only run in a successful Compiere installation created via RUN_Setup or installation/migration via command line. The script can be edited to provide different subscriber information for license validation.

The following line in CLUpdateLicense.bat

```
"%COMPIERE_JAVA%" %COMPIERE_JAVA_OPTIONS% -cp %CLASSPATH% com.compiere.client.UpdateLicense
```

can be be changed as follows to pass in the subscriber information

```
"%COMPIERE_JAVA%" %COMPIERE_JAVA_OPTIONS% -cp %CLASSPATH% com.compiere.client.UpdateLicense --  
sysname xxx --email xxx --password xxx
```

If the parameters are not specified, the subscriber information at the time of installation will be used to update the Licenses